

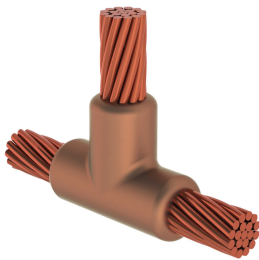
# Cable to Cable, TL, 14.2 mm Ground Wire, 14.2 mm Conductor 1 OD, 14.2 mm Ground Wire, 14.2 mm Conductor 2 OD

## Data Solutions

### KATALOGOVÉ ČÍSLO

---

#### TLRT4T4



nVent ERICO Cadweld graphite molds are designed and engineered for thousands of connection styles and conductor combinations.

### VLASTNOSTI

---

Forms a permanent, low resistance connection

Provides a molecular bond

nVent ERICO Cadweld Exothermic Connections are rated with the same current capacity as the conductor

Portable installation equipment with no external source of power required

Installers can be easily trained to make nVent ERICO Cadweld Exothermic Connections

Connections can be visually inspected

### VLASTNOSTI PRODUKTU

---

Mold Family: TL Mold Family

Conductor 1: 14.2 mm Ground Wire

Conductor 1 Outer Diameter, Nominal: 14.22mm

Conductor 2: 14.2 mm Ground Wire

Conductor 2 Outer Diameter, Nominal: 14.22mm

Mold Split: Vertical

Split Crucible: No

Wear Plates: No

Mold Only: No

Welding Material: 200 or 200PLUSF20, Sold Separately

Handle Clamp: L160, Sold Separately

Price Key: R

Ease of Use: Difficult

## DALŠÍ PODROBNOSTI O PRODUKTU

For applications such as computer room, tunnel or other low-ventilation areas, specify a smokeless nVent ERICO Cadweld Exolon mold. Add an XL prefix to the standard mold part number when ordering (for example, a TAC2Q2Q becomes XLTAC2Q2Q). Similarly, nVent ERICO Cadweld Exolon welding material is also designated by the XL prefix (for example, 150 becomes XL150).

A gap between conductors may be required. See mold tag for more information.

XX-X-XX-XX-L-M-W		
XX	Mold Family	
X	Price Key	
XX	Conductor Code 1	
XX	Conductor Code 2	
L*	Split Crucible	Crucible section is split on molds designed with horizontal opening for easier cleaning
M*	Mold Only	
W*	Wear Plates	Reduce mechanical abrasion of molds at cable entry points

\* Empty if none

## DIAGRAMS



## UPOZORNĚNÍ

Produkty nVent musí být instalovány a používány pouze tak, jak je uvedeno v instrukčních listech a materiálech pro školení nVent. Instrukční listy jsou k dispozici na [www.nvent.com](http://www.nvent.com) a od vašeho zástupce zákaznického servisu nVent. Nesprávná instalace, zneužití, nesprávné použití nebo jiný nedostatek úplného dodržování pokynů a varování nVent může způsobit selhání produktu, poškození majetku, vážné zranění osob a smrt a/nebo zrušit vaši záruku.



Naše portfolio silných značek:

**CADDY   ERICO   HOFFMAN   ILSCO   SCHROFF   TRACHTE**