

# Adjustable I-Beam Adapter



This code-compliant Structural Attachment is part of the nVent CADDY line of innovative rigid bracing system, designed to provide superior performance and meet the highest seismic load requirements. Its innovative design allows quick and easy installation onto a wide range of steel I-Beams. It is ready to use out of the box, eliminating the need for pre-assembly or loose hardware and its snap-off bolts make inspection of seismic sway braces simple.

## CERTIFICERINGER



## FUNKTIONER

No loose parts

No assembly required

Snap-off bolt head helps enable easy installation and inspection of seismic sway braces

Meets NFPA®-13 requirements for seismic sway bracing

FM® Specification Tested

## SPECIFIKATIONER

**Finish:** Electrogalvanized

**Materiale:** Stål

Table 1/2

Katalognummer	Artikelnummer	Flange Thickness (FT)	A	Rod Size 1 (RS1)	Rod Size 2 (RS2)	Height (H)
CSBS3N	404129	6 - 19 mm	100 - 215 mm	3/8"	1/2"	67 mm
CSBS4N	404131	6 - 19 mm	100 - 365 mm	3/8"	1/2"	67 mm
CSBS5N	404133	19 - 31 mm	100 - 455 mm	3/8"	1/2"	79 mm

Table 2/2

Katalognummer	Artikelnummer	Width (W)
CSBS3N	404129	92 mm
CSBS4N	404131	92 mm
CSBS5N	404133	92 mm

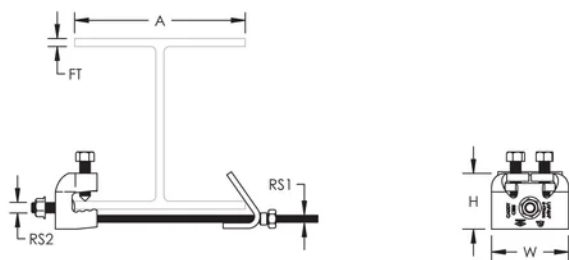
## YDERLIGERE PRODUKTOPLYSNINGER

Structure Attachment and Brace Member are not included.

UL Loads				
Part Number	Structure Attachment Fitting	Flange Thickness	Brace Member	Load Rating
CSBS3xxx	CSBU1xxx	6 - 8 mm	DN25 - DN50 Sch. 40 NPS	6672 N
		8 - 19 mm		7561 N
	CSBURC12	6 - 19 mm	CSB12CBL	1859 N
			CSB18CBL	3434 N
			CSB36CBL	4893 N
	CSBS4xxx	CSBU1xxx	6 - 8 mm	DN25 - DN50 Sch. 40 NPS
8 - 19 mm			7561 N	
CSBURC12		6 - 19 mm	CSB12CBL	1859 N
			CSB18CBL	3434 N
			CSB36CBL	4893 N
CSBS5xxx		CSBU1xxx	6 - 19 mm	DN25 - DN50 Sch. 40 NPS
	CSBURC12		6 - 19 mm	
		CSB18CBL		3434 N
		CSB36CBL		4893 N

FM Loads								
Part Number	Horizontal Capacity per Installation Angle from Vertical							
	Perpendicular to Structure				Parallel to Structure			
	30°- 44°	45°- 59°	60°- 74°	75°- 90°	30°- 44°	45°- 59°	60°- 74°	75°- 90°
CSBS3xxx	5240 N	9830 N	12580 N	13070 N	3640 N	6130 N	9250 N	13380 N
CSBS4xxx	5240 N	9830 N	12580 N	13070 N	3640 N	6130 N	9250 N	13380 N
CSBS5xxx	5420 N	9510 N	11470 N	12760 N	4890 N	8090 N	9740 N	11920 N

## DIAGRAMS



## ADVARSEL

nVent-produkter skal kun installeres og anvendes som angivet i nVents produktvejledninger og træningsmaterialer. Vejledninger er tilgængelige på [www.nvent.com](http://www.nvent.com) og hos din nVent kundeservicerepræsentant. Forkert installation, misbrug, fejlanvendelse eller anden unndladelser af fuldt ud at følge nVents instruktioner og advarsler kan medføre funktionsfejl, materielle skader, alvorlige personskader eller død og/eller ugyldiggøre din garanti.

### North America

+1.800.753.9221  
Option 1 – Customer Care  
Option 2 – Technical  
Support

### Europe

Netherlands:  
+31 800-0200135  
France:  
+33 800 901 793

### Europe

Germany:  
800 1890272  
Other Countries:  
+31 13 5835404

### APAC

Shanghai:  
+ 86 21 2412 1618/19  
Sydney:  
+61 2 9751 8500



Vores kraftfulde portefølje af mærker:

**CADDY ERICO HOFFMAN ILSCO SCHROFF TRACHTE**

