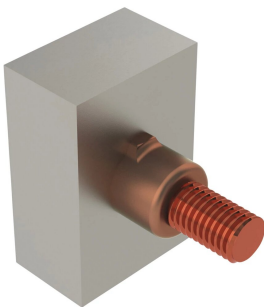


Copper or Steel Stud to Rail

Data Solutions



nVent ERICO Cadweld applications for railway properties utilize the nVent ERICO Cadweld Plus F80 and the nVent ERICO Cadweld F80 welding material alloys. nVent ERICO Cadweld exothermically welded connections are engineered to provide a permanent, molecular bond that will not loosen or corrode, enabling connection of dissimilar materials. The connections are designed to perform for the life of the conductor and/or installation. The nVent ERICO Cadweld connection has a current carrying capacity equal to or greater than that of the conductor and will withstand repeated fault currents without failing during operation. Once completed, installers can clearly ensure quality by visually inspecting the new connection.

FUNKTIONER

Forms a permanent, low resistance connection

Provides a molecular bond

nVent ERICO Cadweld Exothermic Connections are rated with the same current capacity as the conductor

Portable installation equipment with no external source of power required

Installers can be easily trained to make nVent ERICO Cadweld Exothermic Connections

Connections can be visually inspected

SPECIFIKATIONER

Table 1/1

Katalognummer	Mold Family	Stud Type	Connects To
PB13HX31CU	HX Mold Family	5/8" Copper Stud	Rail
PBHVT20P060A1M	HV Mold Family	6 mm x 25 mm Steel Stud	Rail
PBHVT20103245M	HV Mold Family	10 mm x 32 mm Steel Stud	Rail
PBHVT20P100A1M	HV Mold Family	10 mm x 32 mm Steel Stud	Rail
PBHVT2010A150M	HV Mold Family	10 mm x 32 mm Steel Stud	Rail
PBHVT2010CR73M	HV Mold Family	10 mm x 32 mm Steel Stud	Rail
PBHVT20P120A2M	HV Mold Family	12 mm x 38 mm Steel Stud	Rail

Katalognummer	Mold Family	Stud Type	Connects To
PBHVT20P120A1M	HV Mold Family	12 mm x 38 mm Steel Stud	Rail
PBHVT20P16005M	HV Mold Family	16 mm x 48 mm Steel Stud	Rail
PB13HXP100	HX Mold Family	M10 Steel Stud	Rail

YDERLIGERE PRODUKTOPLYSNINGER

For applications such as computer room, tunnel or other low-ventilation areas, specify a smokeless nVent ERICO Cadweld Exolon mold. Add an XL prefix to the standard mold part number when ordering (for example, a PB10GR162G becomes XLPB10GR162G). Similarly, nVent ERICO Cadweld Exolon welding material is also designated by the XL prefix (for example, PB90 becomes XLPB90).

A gap between conductors may be required. See mold tag for more information.

XXXX-XX-XX-L-M-W		
XXXX	Price Key	
XX	Mold Family	
XX	Stud Type	
L*	Split Crucible	Crucible section is split on molds designed with horizontal opening for easier cleaning
M*	Mold Only	
W*	Wear Plates	Reduce mechanical abrasion of molds at cable entry points

* Empty if none

ADVARSEL

nVent-produkter skal kun installeres og anvendes som angivet i nVents produktvejledninger og træningsmaterialer. Vejledninger er tilgængelige på www.nvent.com og hos din nVent kundeservicerepræsentant. Forkert installation, misbrug, fejlanvendelse eller anden unkladelse af fuldt ud at følge nVents instruktioner og advarsler kan medføre funktionsfejl, materielle skader, alvorlige personskader eller død og/eller ugyldiggøre din garanti.



Vores kraftfulde portefølje af mærker:

CADDY ERICO HOFFMAN ILSCO SCHROFF TRACHTE