

# nVent ERIFLEX Flexbus Firestop Block FBB

## Data Solutions



### CERTIFICERINGER



### FUNKTIONER

Highly-elastic moldable block

Easy access for difficult-to-reach openings

Age, smoke and damp resistant

Re-enterable and repairable

Excellent adhesion

No backing material required

F-rating / E-rating up to 2 hours

T-rating / I-rating up to 2 hours

### SPECIFIKATIONER

**Width (W):** 450mm max

**Height (H):** 500mm max

**Farve:** Red; Brown

Table 1/2

Katalognummer	Artikelnummer	A	B	C	Complies With	Density
FLEXFIREBLOCKUL	508154	200mm	130mm	60mm	ASTM E 84 (UL 723), ASTM E 814 (UL 1479)	
FLEXFIREBLOCK	508151	200mm	144mm	60mm	EN 13501-1, EN 1366-3	240 – 300

Table 2/2

Katalognummer	Artikelnummer	Flammability Rating	Unit Weight	Certificeringer
FLEXFIREBLOCKUL	508154		0.56kg	cULus Classified, CE, ESTI ERIFLEX Flexbus, RoHS
FLEXFIREBLOCK	508151	DIN 4102 (B2)	0.56kg	FBS-EN, ESTI ERIFLEX Flexbus, RoHS, CE

## YDERLIGERE PRODUKTOPLYSNINGER

The thickness of the penetration seal has to be minimum 200mm, depending on the fire resistance classification (see Annex J-1 of the ETA) in order to obtain EI120 fire-resistance.

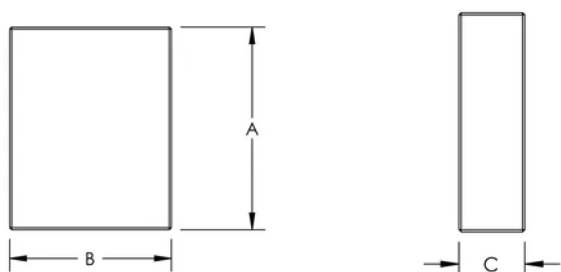
If 200mm is not possible, the FIB (intumescent wrap) needs to be used around the Flexbus Conductors and with 150mm width on both sides in order to reach EI120 fire resistance.

The width and height is referring to the maximum opening size of the penetration seal.

The total cross section of the installation (including insulation and conductor) must not be more than 60% of the opening size of the penetration seal.

The first support for the Flexbus Conductor has to be at a maximum 200mm measured from the surface of the penetration seal.

## DIAGRAMS



## ADVARSEL

nVent-produkter skal kun installeres og anvendes som angivet i nVents produktvejledninger og træningsmaterialer. Vejledninger er tilgængelige på [www.nvent.com](http://www.nvent.com) og hos din nVent kundeservicerepræsentant. Forkert installation, misbrug, fejlanvendelse eller anden unladelse af fuldt ud at følge nVents instruktioner og advarsler kan medføre funktionsfejl,

materielle skader, alvorlige personskader eller død og/eller ugyldiggøre din garanti.



Vores kraftfulde portefølje af mærker:

**CADDY ERICO HOFFMAN ILSCO SCHROFF TRACHTE**