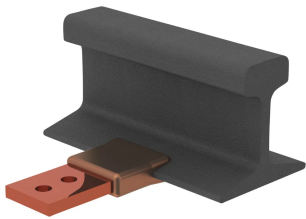
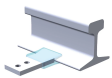


# Lug to Rail



nVent ERICO Cadweld applications for railway properties utilize the nVent ERICO Cadweld Plus F80 and the nVent ERICO Cadweld F80 welding material alloys. nVent ERICO Cadweld exothermically welded connections are engineered to provide a permanent, molecular bond that will not loosen or corrode, enabling connection of dissimilar materials. The connections are designed to perform for the life of the conductor and/or installation. The nVent ERICO Cadweld connection has a current carrying capacity equal to or greater than that of the conductor and will withstand repeated fault currents without failing during operation. Once completed, installers can clearly ensure quality by visually inspecting the new connection.

## DIAGRAMS



## FUNKTIONER

Forms a permanent, low resistance connection

Provides a molecular bond

nVent ERICO Cadweld Exothermic Connections are rated with the same current capacity as the conductor

Portable installation equipment with no external source of power required

Installers can be easily trained to make nVent ERICO Cadweld Exothermic Connections

Connections can be visually inspected

## SPECIFIKATIONER

Table 1/1

Katalognummer	Mold Family	Lug/Busbar Size	Rail Type
PB72QVJH84C	QV	1/2" x 2"	84 lb Composite
PB72XLQVJH84CS	QV	1/2" x 2"	84 lb Composite
PB80QVJHV	QV	1/2" x 2"	150 lb Inverted Bethlehem
PB80QVJHVM	QV	1/2" x 2"	150 lb Inverted Bethlehem

Katalognummer	Mold Family	Lug/Busbar Size	Rail Type
PBXL72QVJH150BS	QV	1/2" x 2"	150 lb Bethlehem

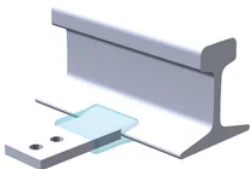
## YDERLIGERE PRODUKTOPLYSNINGER

For applications such as computer room, tunnel or other low-ventilation areas, specify a smokeless nVent ERICO Cadweld Exolon mold. Add an XL prefix to the standard mold part number when ordering (for example, a PB10GR162G becomes XLPB10GR162G). Similarly, nVent ERICO Cadweld Exolon welding material is also designated by the XL prefix (for example, PB90 becomes XLPB90).

XXXX-XX-XX-XX-L-M-W		
XXXX	Price Key	
XX	Mold Family	
XX	Lug/Busbar Size	
XX	Rail Type	
L*	Split Crucible	Crucible section is split on molds designed with horizontal opening for easier cleaning
M*	Mold Only	
W*	Wear Plates	Reduce mechanical abrasion of molds at cable entry points

\* Empty if none

## DIAGRAMS



## ADVARSEL

nVent-produkter skal kun installeres og anvendes som angivet i nVents produktvejledninger og træningsmaterialer. Vejledninger er tilgængelige på [www.nvent.com](http://www.nvent.com) og hos din nVent kundeservicerepræsentant. Forkert installation, misbrug, fejlanvendelse eller anden unladelse af fuldt ud at følge nVents instruktioner og advarsler kan medføre funktionsfejl, materielle skader, alvorlige personskader eller død og/eller ugyldiggøre din garanti.

**North America**

+1.800.753.9221

Option 1 – Customer Care

Option 2 – Technical

Support

**Europe**

Netherlands:

+31 800-0200135

France:

+33 800 901 793

**Europe**

Germany:

800 1890272

Other Countries:

+31 13 5835404

**APAC**

Shanghai:

+ 86 21 2412 1618/19

Sydney:

+61 2 9751 8500



Vores kraftfulde portefølje af mærker:

**CADDY**

**ERICO**

**HOFFMAN**

**ILSCO**

**SCHROFF**

**TRACHTE**