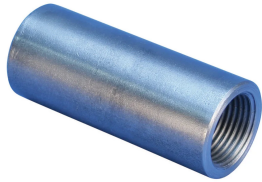


A12 Standard Coupler, Modified



This coupler is modified to specifically meet the requirements of the Sellafield Engineering Standard ES_0_3110, CARES Appendix TA1-C, Class B and CARES Appendix TA1-C, Class A (when combined with nVent LENTON Plus)

FUNKTIONER

Designed to splice the same diameter bars where the second bar can be rotated and is not restricted in its axial direction

Slim design maintains concrete cover

Installs quickly and easily

SPECIFIKATIONER

Table 1/2

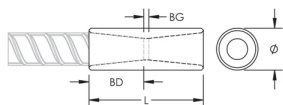
Katalognummer	Materiale	Finish	Design Version	Rebar Size, Metric	Diameter (Ø)	Length (L)
EL50TA12X0285N	Stål	Plain	Worldwide (Globally Available Materials)	50 mm	70 mm	285mm

Table 2/2

Katalognummer	Bar Depth (BD)	Bar Gap (BG)	Unit Weight	Pakke mængde
EL50TA12X0285N	70mm	145mm	6.27 kg	3

Designed to Meet: AASHTO;ABNT NBR 8548:1984;ACI 318 Type 1 (125% Specified Yield);ACI 318 Type 2 (Specified Tensile);ACI 349;ACI 359;AS3600

DIAGRAMS



ADVARSEL

nVent-produkter skal kun installeres og anvendes som angivet i nVents produktvejledninger og træningsmaterialer. Vejledninger er tilgængelige på www.nvent.com og hos din nVent kundeservicerepræsentant. Forkert installation, misbrug, fejlanvendelse eller anden undladelse af fuldt ud at følge nVents instruktioner og advarsler kan medføre funktionsfejl, materielle skader, alvorlige personskader eller død og/eller ugyldiggøre din garanti.

North America

+1.800.753.9221

Option 1 – Customer Care

Option 2 – Technical

Support

Europe

Netherlands:

+31 800-0200135

France:

+33 800 901 793

Europe

Germany:

800 1890272

Other Countries:

+31 13 5835404

APAC

Shanghai:

+ 86 21 2412 1618/19

Sydney:

+61 2 9751 8500



Vores kraftfulde portefølje af mærker:

CADDY

ERICO

HOFFMAN

ILSCO

SCHROFF

TRACHTE