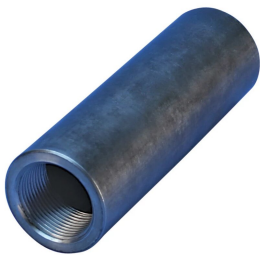


# P13 Position Coupler, Female Only, Worldwide Design, 18 mm

## KATALOGNUMMER

**EL18P13LFN**



Used in segmental pour and closure pour applications. Male and female components are sold separately.

## FUNKTIONER

Designed to splice two curved, bent or straight bars, when neither bar can be rotated and where the ongoing bar is NOT free to move in its axial direction

Adjustability in the female end of the coupler allows the coupler to extend out to meet the taper-threaded reinforcing bar

## PRODUKTEGENSKABER

Materiale: Stål

Finish: Plain

Coupler Adjustment: Standard

Rebar Size, Metric: 18 mm

Diameter (Ø): 35 mm

Coupler Body (CB): 101mm

Bar Depth (BD): 29mm

Thread Size (TS): M24

Unit Weight: 0.47 kg

Pakke mængde: 50

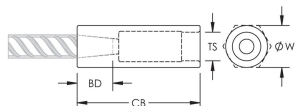
## YDERLIGERE PRODUKTOPLYSNINGER

---

Bar dimensions and weights listed may vary by region. Coupler sizes not shown may be available by special order. Contact your nVent LENTON representative for more information.

## DIAGRAMS

---



## ADVARSEL

---

nVent-produkter skal kun installeres og anvendes som angivet i nVents produktvejledninger og træningsmaterialer. Vejledninger er tilgængelige på [www.nvent.com](http://www.nvent.com) og hos din nVent kundeservicerepræsentant. Forkert installation, misbrug, fejlanvendelse eller anden unkladelse af fuldt ud at følge nVents instruktioner og advarsler kan medføre funktionsfejl, materielle skader, alvorlige personskader eller død og/eller ugyldiggøre din garanti.

### North America

+1.800.753.9221  
Option 1 – Customer Care  
Option 2 – Technical  
Support

### Europe

Netherlands:  
+31 800-0200135  
France:  
+33 800 901 793

### Europe

Germany:  
800 1890272  
Other Countries:  
+31 13 5835404

### APAC

Shanghai:  
+ 86 21 2412 1618/19  
Sydney:  
+61 2 9751 8500



Vores kraftfulde portefølje af mærker:

**CADDY ERICO HOFFMAN ILSCO SCHROFF TRACHTE**