

# A12 Standard Coupler for Cryogenic Applications, 20 mm, #6, 20M

## KATALOGNUMMER

**EL20A12CRN**



The nVent LENTON brand of cryogenic reinforcement splicing systems should be specified whenever cryogenic-grade reinforcing bar is used, or during normal operating or emergency conditions where the temperature falls below -20 °C (-4 °F). By combining the nVent LENTON taper-threaded couplers with state-of-the-art materials, we have developed one of the slimmest couplers on the market, while still maintaining top performance. Typical construction projects include LNG and LPG storage tanks.

## FUNKTIONER

Designed to splice the same diameter bars where the second bar can be rotated and is not restricted in its axial direction

Slim design maintains concrete cover

Installs quickly and easily

Improved performance and reliability at cryogenic temperatures (-168 °C / -270 °F)

## PRODUKTEGENSKABER

Materiale: Stainless Steel 431 (EN 1.4057)

Finish: Plain

Rebar Size, Metric: 20 mm

Rebar Size, US: #6

Rebar Size, Canada: 20M

Diameter (Ø): 30 mm

Length (L): 87mm

Bar Depth (BD): 35mm

Bar Gap (BG): 17mm

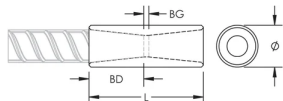
Unit Weight: 0.32 kg

Designed to Meet: ACI 318 Type 1 (125% Specified Yield);ACI 318 Type 2 (Specified Tensile);AS3600;BS EN 1992-1-1;DIN EN 1992-1-1;EN 14620-3;Eurocode 2

## YDERLIGERE PRODUKTOPLYSNINGER

Bar dimensions and weights listed may vary by region. Coupler sizes not shown may be available by special order. Contact your nVent LENTON representative for more information.

## DIAGRAMS



## ADVARSEL

nVent-produkter skal kun installeres og anvendes som angivet i nVents produktvejledninger og træningsmaterialer. Vejledninger er tilgængelige på [www.nvent.com](http://www.nvent.com) og hos din nVent kundeservicerepræsentant. Forkert installation, misbrug, fejlanvendelse eller anden unladelse af fuldt ud at følge nVents instruktioner og advarsler kan medføre funktionsfejl, materielle skader, alvorlige personskader eller død og/eller ugyldiggøre din garanti.

### North America

+1.800.753.9221  
Option 1 – Customer Care  
Option 2 – Technical  
Support

### Europe

Netherlands:  
+31 800-0200135  
France:  
+33 800 901 793

### Europe

Germany:  
800 1890272  
Other Countries:  
+31 13 5835404

### APAC

Shanghai:  
+ 86 21 2412 1618/19  
Sydney:  
+61 2 9751 8500



Vores kraftfulde portefølje af mærker:

**CADDY ERICO HOFFMAN ILSCO SCHROFF TRACHTE**