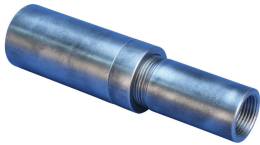


# P24 Position Coupler, 28 mm, #9, 30M

## KATALOGNUMMER

**EL28P24L**



The P24 family of position couplers is designed for use on ASTM A615 grade 100 (700 MPa) reinforcing steel. The performance of the spliced connection is designed to meet the bars' specified ultimate tensile strength of 115 ksi (792 MPa).

## FUNKTIONER

Designed to splice the same diameter bars

Designed to splice two curved, bent or straight bars, when neither bar can be rotated and where the ongoing bar is free to move in its axial direction

## PRODUKTEGENSKABER

Materiale: Stål

Finish: Plain

100% U.S. Domestic Content: Yes

Rebar Size, Metric: 28 mm

Rebar Size, US: #9

Rebar Size, Canada: 30M

Diameter (Ø): 57 mm

Length 1 (L1): 192 mm

Length 2 (L2): 208 mm

Bar Depth (BD): 42mm

Bar Gap 1 (BG1): 108mm

Bar Gap 2 (BG2): 124mm

Coupler Body (CB): 104mm

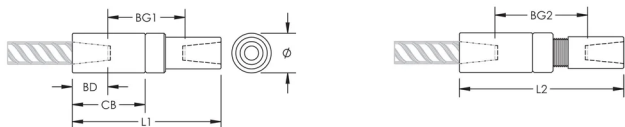
Unit Weight: 2.85 kg

Pakke mængde: 6

## YDERLIGERE PRODUKTOPLYSNINGER

Bar dimensions and weights listed may vary by region. Coupler sizes not shown may be available by special order. Contact your nVent LENTON representative for more information.

## DIAGRAMS



## ADVARSEL

nVent-produkter skal kun installeres og anvendes som angivet i nVents produktvejledninger og træningsmaterialer. Vejledninger er tilgængelige på [www.nvent.com](http://www.nvent.com) og hos din nVent kundeservicerepræsentant. Forkert installation, misbrug, fejlanvendelse eller anden undladelse af fuldt ud at følge nVents instruktioner og advarsler kan medføre funktionsfejl, materielle skader, alvorlige personskader eller død og/eller ugyldiggøre din garanti.

### North America

+1.800.753.9221  
Option 1 – Customer Care  
Option 2 – Technical  
Support

### Europe

Netherlands:  
+31 800-0200135  
France:  
+33 800 901 793

### Europe

Germany:  
800 1890272  
Other Countries:  
+31 13 5835404

### APAC

Shanghai:  
+ 86 21 2412 1618/19  
Sydney:  
+61 2 9751 8500



Vores kraftfulde portefølje af mærker:

**CADDY ERICO HOFFMAN ILSCO SCHROFF TRACHTE**