

# S13 Metric Parallel Bolt Coupler, Plain, Worldwide Design, 28 mm, #9, 30M, 50 mm dia, 64 mm, M33 Thread

## KATALOGNUMMER

**EL28S13N**



## CERTIFICERINGER



## FUNKTIONER

Provides continuity between reinforcing bar and ISO® 965 metric all-thread rod or bolts

May be used to anchor load-bearing equipment to foundations, columns or walls

Machined from non-weldable grades of material, but can be tack welded

## PRODUKTEGENSKABER

Materiale: Stål

Finish: Plain

Design Version: Worldwide (Globally Available Materials)

Rebar Size, Metric: 28 mm

Rebar Size, US: #9

Rebar Size, Canada: 30M

Diameter (Ø): 50 mm

Length (L): 115mm

A: 64 mm

Bar Depth (BD): 42mm

Thread Size (TS): M33

Thread Depth (TD): 37mm

Unit Weight: 1.16 kg

Designed to Meet: AASHTO;ABNT NBR 8548:1984;ACI 318 Type 1 (125% Specified Yield);ACI 318 Type 2 (Specified Tensile);ACI 349;ACI 359;AS3600

Pakke mængde: 21

## **YDERLIGERE PRODUKTOPLYSNINGER**

---

Bar dimensions and weights listed may vary by region. Coupler sizes not shown may be available by special order. Contact your nVent LENTON representative for more information.

Coupler supplied without bolt.

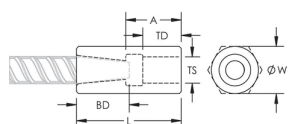
Bolt may be replaced by threaded rod of same class/grade.

All calculations based on a minimum bolt engagement equal to Thread Depth (TD).

System Capacity based on bolt to coupler connection. For rebar to coupler connection, refer to applicable building codes and approvals or contact your nVent LENTON representative.

| Bolt-to-Coupler Capacity (kN) |           |           |           |            |            |
|-------------------------------|-----------|-----------|-----------|------------|------------|
| Part Number                   | Grade 4.8 | Grade 5.8 | Grade 8.8 | Grade 10.9 | Grade 12.9 |
| EL10S13N                      | 33.7      | 42.1      | 67.4      | 67.7       | 67.7       |
| EL12S13AN                     | 224.2     | 280.3     | 448.5     | 526.3      | 526.3      |
| EL12S13N                      | 62.7      | 78.3      | 109.8     | 109.8      | 109.8      |
| EL14S13N                      | 77.0      | 96.2      | 154.0     | 192.5      | 193.4      |
| EL16S13N                      | 97.9      | 122.4     | 162.0     | 162.0      | 162.0      |
| EL18S13N                      | 121.4     | 151.7     | 242.7     | 303.4      | 364.1      |
| EL20S13AN                     | 121.4     | 151.7     | 242.7     | 303.4      | 356.8      |
| EL20S13BN                     | 97.9      | 122.4     | 195.8     | 244.8      | 289.4      |
| EL20S13N                      | 141.0     | 176.3     | 282.0     | 332.3      | 332.3      |
| EL22S13N                      | 183.8     | 229.7     | 367.5     | 449.9      | 449.9      |
| EL25S13AN                     | 141.0     | 176.3     | 282.0     | 352.5      | 422.9      |
| EL25S13BN                     | 97.9      | 122.4     | 195.8     | 244.8      | 293.8      |
| EL25S13N                      | 224.2     | 280.3     | 448.5     | 560.5      | 560.5      |
| EL28S13N                      | 277.4     | 346.8     | 554.8     | 693.6      | 728.0      |
| EL30S13N                      | 326.7     | 408.4     | 653.4     | 816.7      | 890.7      |
| EL32S13AN                     | 224.2     | 280.3     | 448.5     | 560.6      | 672.7      |
| EL32S13N                      | 390.3     | 487.9     | 780.6     | 783.8      | 783.8      |
| EL34S13N                      | 390.3     | 487.9     | 780.6     | 783.8      | 783.8      |
| EL36S13N                      | 448.4     | 560.5     | 896.7     | 1120.9     | 1197.1     |
| EL38S13N                      | 522.4     | 653.0     | 1044.8    | 1054.8     | 1054.8     |
| EL40S13AN                     | 589.3     | 736.6     | 1178.5    | 1312.4     | 1312.4     |
| EL40S13BN                     | 326.7     | 408.4     | 653.4     | 816.7      | 980.1      |
| EL40S13CN                     | 224.2     | 280.3     | 448.5     | 560.6      | 672.7      |
| EL40S13M33N                   | 522.4     | 653.0     | 1044.8    | 1054.8     | 1054.8     |
| EL40S13N                      | 522.4     | 653.0     | 1044.8    | 1054.8     | 1054.8     |
| EL50TS13M33N                  | 812.0     | 1015.0    | 1624.0    | 2030.0     | 2168.3     |
| EL50TS13N                     | 812.0     | 1015.0    | 1624.0    | 2030.0     | 2168.3     |

## DIAGRAMS



## ADVARSEL

nVent-produkter skal kun installeres og anvendes som angivet i nVents produktvejledninger og træningsmaterialer. Vejledninger er tilgængelige på [www.nvent.com](http://www.nvent.com) og hos din nVent kundeservicerepræsentant. Forkert installation, misbrug, fejlanvendelse eller anden undladelse af fuldt ud at følge nVents instruktioner og advarsler kan medføre funktionsfejl, materielle skader, alvorlige personskader eller død og/eller ugyldiggøre din garanti.

**North America**

+1.800.753.9221

Option 1 – Customer Care

Option 2 – Technical

Support

**Europe**

Netherlands:

+31 800-0200135

France:

+33 800 901 793

**Europe**

Germany:

800 1890272

Other Countries:

+31 13 5835404

**APAC**

Shanghai:

+ 86 21 2412 1618/19

Sydney:

+61 2 9751 8500



Vores kraftfulde portefølje af mærker:

**CADDY**

**ERICO**

**HOFFMAN**

**ILSCO**

**SCHROFF**

**TRACHTE**