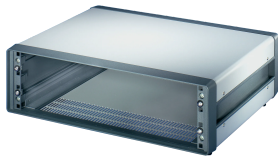


Comptec 19" Desktop Case, Unshielded



The nVent SCHROFF Comptec case is compatible with a 19" cabinet and is used to house assemblies such as 19" subracks, 19" fan trays or 19" front panels. This case is also typically used for desktop applications.

CERTIFICERINGER



FUNKTIONER

Desktop case (pre-fitted)

Unshielded

Ventilation slits in base plate

Front and rear frames in die-cast Al

Top cover, base plate and rear panel in steel

Conforms with DIN EN 62368-1

SPECIFIKATIONER

- Product Type:** Case
Type: Case for 19" Subrack and 19" Chassis
Produktfamilie: Comptec

Table 1/2

Katalognummer	Rack Height	Højde	Rack Width	Dybde	Materiale	Pakke mængde
10225-615	6U	286mm	84HP	400mm	Aluminium, Stål	1

Katalognummer	Rack Height	Højde	Rack Width	Dybde	Materiale	Pakke mængde
10225-670	12U	553mm	84HP	400mm	Aluminium	1
10225-602	4U	198mm	84HP	300mm	Aluminium, Stål	1
10225-667	9U	420mm	84HP	400mm	Aluminium	1
10225-640	9U	420mm	84HP	600mm	Aluminium, Stål	1
10225-638	7U	331mm	84HP	600mm	Aluminium, Stål	1
10225-682	9U	420mm	84HP	500mm	Aluminium	1
10225-637	6U	286mm	84HP	600mm	Aluminium, Stål	1
10225-604	6U	286mm	84HP	300mm	Aluminium, Stål	1
10225-629	9U	420mm	84HP	500mm	Aluminium, Stål	1
10225-627	7U	331mm	84HP	500mm	Aluminium, Stål	1
10225-685	12U	553mm	84HP	500mm	Aluminium	1
10225-626	6U	286mm	84HP	500mm	Aluminium, Stål	1
10225-624	4U	198mm	84HP	500mm	Aluminium, Stål	1
10225-693	9U	420mm	84HP	600mm	Aluminium	1
10225-612	3U	153mm	84HP	400mm	Aluminium, Stål	1
10225-623	3U	153mm	84HP	500mm	Aluminium, Stål	1
10225-601	3U	153mm	84HP	300mm	Aluminium, Stål	1
10225-618	9U	420mm	84HP	400mm	Aluminium, Stål	1
10225-696	12U	553mm	84HP	600mm	Aluminium	1

Table 2/2

Katalognummer	Rack Height	Højde	Rack Width	Dybde	Materiale	Pakke mængde
10225-616	7U	331mm	84HP	400mm	Aluminium, Stål	1
10225-613	4U	198mm	84HP	400mm	Aluminium, Stål	1

Table 1/2

Katalognummer	Usable Height	Usable Width	Front Frame Construction	Cooling Option	Complies With	EMC Shielding
10225-615	267.6mm	451mm	Single Piece	No	IEC 60297-3-100	No
10225-670	534mm	451mm	Single Piece	No	IEC 60297-3-100	No
10225-602	178.7mm	451mm	Single Piece	No	IEC 60297-3-100	No
10225-667	400.9mm	451mm	Single Piece	No	IEC 60297-3-100	No

Katalognummer	Usable Height	Usable Width	Front Frame Construction	Cooling Option	Complies With	EMC Shielding
10225-640	400.9mm	451mm	Single Piece	No	IEC 60297-3-100	No
10225-638	312mm	451mm	Single Piece	No	IEC 60297-3-100	No
10225-682	400.9mm	451mm	Single Piece	No	IEC 60297-3-100	No
10225-637	267.6mm	451mm	Single Piece	No	IEC 60297-3-100	No
10225-604	267.6mm	451mm	Single Piece	No	IEC 60297-3-100	No
10225-629	400.9mm	451mm	Single Piece	No	IEC 60297-3-100	No
10225-627	312mm	451mm	Single Piece	No	IEC 60297-3-100	No
10225-685	534mm	451mm	Single Piece	No	IEC 60297-3-100	No
10225-626	267.6mm	451mm	Single Piece	No	IEC 60297-3-100	No
10225-624	178.7mm	451mm	Single Piece	No	IEC 60297-3-100	No
10225-693	400.9mm	451mm	Single Piece	No	IEC 60297-3-100	No
10225-612	134.2mm	451mm	Single Piece	No	IEC 60297-3-100	No
10225-623	134.2mm	451mm	Single Piece	No	IEC 60297-3-100	No
10225-601	134.2mm	451mm	Single Piece	No	IEC 60297-3-100	No
10225-618	400.9mm	451mm	Single Piece	No	IEC 60297-3-100	No
10225-696	534mm	451mm	Single Piece	No	IEC 60297-3-100	No

Table 2/2

Katalognummer	Usable Height	Usable Width	Front Frame Construction	Cooling Option	Complies With	EMC Shielding
10225-616	312mm	451mm	Single Piece	No	IEC 60297-3-100	No
10225-613	178.7mm	451mm	Single Piece	No	IEC 60297-3-100	No

Table 1/2

Katalognummer	Finish	Beskyttelsesgrad	Static Load	Bredde
10225-615	Struktur Pulvermaling	IP20	40kg	520mm
10225-670	Struktur Pulvermaling	IP20	40kg	520mm
10225-602	Struktur Pulvermaling	IP20	40kg	520mm
10225-667	Struktur Pulvermaling	IP20	40kg	520mm
10225-640	Struktur Pulvermaling	IP20	40kg	520mm
10225-638	Struktur Pulvermaling	IP20	40kg	520mm
10225-682	Struktur Pulvermaling	IP20	40kg	520mm
10225-637	Struktur Pulvermaling	IP20	40kg	520mm
10225-604	Struktur Pulvermaling	IP20	40kg	520mm
10225-629	Struktur Pulvermaling	IP20	40kg	520mm
10225-627	Struktur Pulvermaling	IP20	40kg	520mm
10225-685	Struktur Pulvermaling	IP20	40kg	520mm
10225-626	Struktur Pulvermaling	IP20	40kg	520mm
10225-624	Struktur Pulvermaling	IP20	40kg	520mm
10225-693	Struktur Pulvermaling	IP20	40kg	520mm
10225-612	Struktur Pulvermaling	IP20	40kg	520mm
10225-623	Struktur Pulvermaling	IP20	40kg	520mm
10225-601	Struktur Pulvermaling	IP20	40kg	520mm
10225-618	Struktur Pulvermaling	IP20	40kg	520mm
10225-696	Struktur Pulvermaling	IP20	40kg	520mm

Table 2/2

Katalognummer	Finish	Beskyttelsesgrad	Static Load	Bredde
10225-616	Struktur Pulvermaling	IP20	40kg	520mm
10225-613	Struktur Pulvermaling	IP20	40kg	520mm

ADVARSEL

nVent-produkter skal kun installeres og anvendes som angivet i nVents produktvejledninger og træningsmaterialer. Vejledninger er tilgængelige på www.nvent.com og hos din nVent kundeservicerepræsentant. Forkert installation, misbrug, fejlanvendelse eller anden unndladelser af fuldt ud at følge nVents instruktioner og advarsler kan medføre funktionsfejl, materielle skader, alvorlige personskader eller død og/eller ugyldiggøre din garanti.

North America

All locations
+1.763.422.2661
Chat with us:
nvent.com/schroff

Europe

Straubenhardt, Germany
+49.7082.794.0
Betschdorf, France
+33.3.88.90.64.90
Warsaw, Poland
+48.22.209.98.35
Assago, Italy
+39.02.932.7141
Chat with us:
nvent.com/schroff

Asia

Shanghai, China
+86.21.2412.6943
Qingdao, China
+86.532.8771.6101
Singapore
+65.6768.5800
Shin-Yokohama, Japan
+81.45.476.0271
Chat with us:
nvent.com/schroff

Middle East & India

Dubai, United Arab
Emirates
+971.4.378.1700
Bangalore, India
+91.80.6715.2001
Istanbul, Turkey
+90.216.250.7374
Chat with us:
nvent.com/schroff



Vores kraftfulde portefølje af mærker:

CADDY ERICO HOFFMAN ILSCO SCHROFF TRACHTE