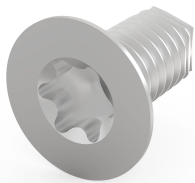


# Countersunk Screw, Torx

Screw for cases, systems, and subracks to secure several accessories.



## CERTIFICERINGER



## FUNKTIONER

For screwing of Subrack or Case accessories

## SPECIFIKATIONER

**Produktfamilie:** EuropacPRO; RatiopacPRO; RatiopacPRO AIR; CompacPRO; PropacPRO; MultipacPRO

**Type:** Countersunk Screw

**Product Type:** Screw

Table 1/2

Katalognummer	Length	Materiale	Finish	Pakke mængde	Thread Size	Works With
24571-373	8mm	Stål	Nickel Plated	100	M4	RatiopacPRO
24560-146	5mm	Stål	Nickel Plated	100	M2.5	Subracks, Cases, Chassis

Table 2/2

Katalognummer	Torque	Certificeringer
24571-373	2.4N·m	

Katalognummer	Torque	Certificeringer
24560-146		RoHS

## ADVARSEL

nVent-produkter skal kun installeres og anvendes som angivet i nVents produktvejledninger og træningsmaterialer. Vejledninger er tilgængelige på [www.nvent.com](http://www.nvent.com) og hos din nVent kundeservicerepræsentant. Forkert installation, misbrug, fejlanvendelse eller anden unndladelse af fuldt ud at følge nVents instruktioner og advarsler kan medføre funktionsfejl, materielle skader, alvorlige personskader eller død og/eller ugyldiggøre din garanti.

### North America

All locations  
+1.763.422.2661  
Chat with us:  
[nvent.com/schroff](http://nvent.com/schroff)

### Europe

Straubenhardt, Germany  
+49.7082.794.0  
Betschdorf, France  
+33.3.88.90.64.90  
Warsaw, Poland  
+48.22.209.98.35  
Assago, Italy  
+39.02.932.7141  
Chat with us:  
[nvent.com/schroff](http://nvent.com/schroff)

### Asia

Shanghai, China  
+86.21.2412.6943  
Qingdao, China  
+86.532.8771.6101  
Singapore  
+65.6768.5800  
Shin-Yokohama, Japan  
+81.45.476.0271  
Chat with us:  
[nvent.com/schroff](http://nvent.com/schroff)

### Middle East & India

Dubai, United Arab Emirates  
+971.4.378.1700  
Bangalore, India  
+91.80.6715.2001  
Istanbul, Turkey  
+90.216.250.7374  
Chat with us:  
[nvent.com/schroff](http://nvent.com/schroff)



Vores kraftfulde portefølje af mærker:

**CADDY ERICO HOFFMAN ILSCO SCHROFF TRACHTE**