

B162 Earthpoint, Two Stud



FEATURES

Long-lasting design

Low ground resistance and impedance

Superior electrical conductivity and resistance to corrosion

Electrically and mechanically robust and reliable

Easy to install as a Prefabricated Earthbridge once nVent ERICO Cadweld welded to a piece of conductor

SPECIFICATIONS

Table 1/2

Catalog Number	Material	Width 1 (W1)	Width 2 (W2)	Depth (D)	Height (H)	Diameter (Ø)
B162Y1	Bronze	44.5 mm	82.55 mm	41.28mm	76.2 mm	6.2 mm
B162Y2	Bronze	44.5 mm	82.55 mm	41.28mm	76.2 mm	7.9 mm
B162Y3	Bronze	44.5 mm	82.55 mm	41.28mm	76.2 mm	9.1 mm
B162Y4	Bronze	44.5 mm	82.55 mm	41.28mm	76.2 mm	10.5 mm
B162Y5	Bronze	44.5 mm	82.55 mm	41.28mm	76.2 mm	12.3 mm
B1622Q	Brass	44.45 mm	82.55 mm	41.28mm	76.2 mm	13.46 mm
B162Y6	Bronze	44.5 mm	82.55 mm	41.28mm	76.2 mm	14.6 mm
B1629G	Bronze	44.5 mm	82.6 mm	41.28mm	76.2 mm	16.3 mm
B162Y8	Bronze	44.5 mm	82.6 mm	41.28mm	76.2 mm	17.8 mm

Table 2/2

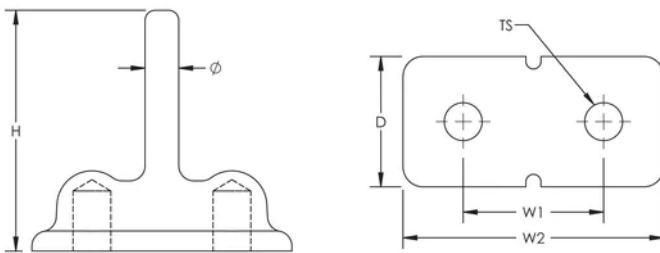
Catalog Number	Thread Size (TS)
----------------	------------------

B162Y1	M12
B162Y2	M12
B162Y3	M12
B162Y4	M12
B162Y5	M12
B1622Q	1/2" UNC
B162Y6	M12
B1629G	M12
B162Y8	M12

ADDITIONAL PRODUCT DETAILS

Assemblies require conductors and nVent ERICO Cadweld connections, which must be ordered separately.

DIAGRAMS



WARNING

nVent products shall be installed and used only as indicated in nVent's product instruction sheets and training materials. Instruction sheets are available at www.nvent.com and from your nVent customer service representative. Improper installation, misuse, misapplication or other failure to completely follow nVent's instructions and warnings may cause product malfunction, property damage, serious bodily injury and death and/or void your warranty.

⚠ WARNING: This product can expose you to chemicals including lead, which is known to the State of California to cause cancer and birth defects or other reproductive harm. For more information go to www.P65Warnings.ca.gov.

North America

+1.800.753.9221

Option 1 – Customer Care

Option 2 – Technical

Support

Europe

Netherlands:

+31 800-0200135

France:

+33 800 901 793

Europe

Germany:

800 1890272

Other Countries:

+31 13 5835404

APAC

Shanghai:

+ 86 21 2412 1618/19

Sydney:

+61 2 9751 8500



Our powerful portfolio of brands:

CADDY

ERICO

HOFFMAN

ILSCO

SCHROFF

TRACHTE