

# Eye Nut



## FEATURES

Use with anchors to install catenary system directly to concrete

## SPECIFICATIONS

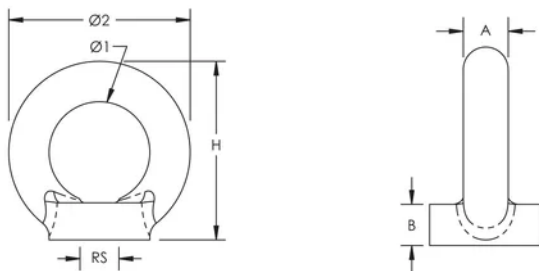
Table 1/2

Catalog Number	Article Number	Material	Finish	Rod Size (RS)	Diameter 1 (Ø1)	Diameter 2 (Ø2)
196855	196855	Steel	Hot-Dip Galvanized	M12	30 mm	54 mm

Table 2/2

Catalog Number	Article Number	Height (H)	A	B
196855	196855	53 mm	12 mm	12 mm

## DIAGRAMS



## WARNING

---

nVent products shall be installed and used only as indicated in nVent's product instruction sheets and training materials. Instruction sheets are available at [www.nvent.com](http://www.nvent.com) and from your nVent customer service representative. Improper installation, misuse, misapplication or other failure to completely follow nVent's instructions and warnings may cause product malfunction, property damage, serious bodily injury and death and/or void your warranty.

### North America

+1.800.753.9221

Option 1 – Customer Care

Option 2 – Technical

Support

### Europe

Netherlands:

+31 800-0200135

France:

+33 800 901 793

### Europe

Germany:

800 1890272

Other Countries:

+31 13 5835404

### APAC

Shanghai:

+ 86 21 2412 1618/19

Sydney:

+61 2 9751 8500



Our powerful portfolio of brands:

**CADDY ERICO HOFFMAN ILSCO SCHROFF TRACHTE**

