

I-Beam Attachment



CERTIFICATIONS



FEATURES

Snap-off bolt head helps enable easy installation and inspection of seismic sway braces

Meets NFPA®-13 requirements for seismic sway bracing

Meets CEN/TS 17551:2021 requirements for Seismic Sway Bracing

SPECIFICATIONS

Table 1/2

Catalog Number	Article Number	Material	Finish	Flange Thickness (FT)	Rod Size (RS)	Height (H)
CSBBC075EG	404350	Cast Iron	Electrogalvanized	6.4 - 19.1 mm	0.5	63.5 mm

Table 2/2

Catalog Number	Article Number	Width (W)
CSBBC075EG	404350	69.9 mm

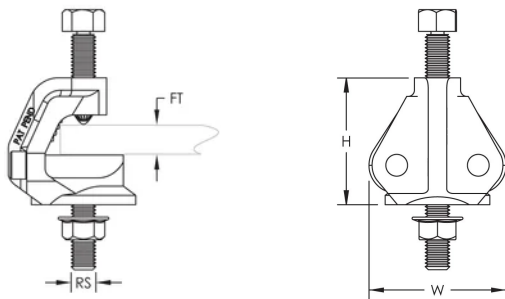
ADDITIONAL PRODUCT DETAILS

Structure Attachment and Brace Member are not included.

UL Loads				
Part Number	Structure Attachment Fitting	Flange Thickness	Brace Member	Load Rating
CSBBC075	CSBUNIV050	6 - 19 mm	DN25 - DN50 Sch. 40 NPS	3025 N
			CSB12CBL	1859 N
	CSBURC12	6 - 19 mm	CSB18CBL	3434 N
			CSB36CBL	3025 N
			CSB12CBL	1859 N
	CSBNPC12	6 - 19 mm	CSB18CBL	3434 N
CSB36CBL			3025 N	

FM Loads					
Brace Direction to Structure	Service Pipe Size	Horizontal Capacity per Installation Angle from Vertical			
		30° - 44°	45° - 59°	60° - 74°	75° - 90°
Parallel	N/A	7,210 N	7,610 N	4,490 N	4,940 N
Perpendicular	N/A	5,290 N	7,470 N	5,160 N	5,690 N

DIAGRAMS



WARNING

nVent products shall be installed and used only as indicated in nVent's product instruction sheets and training materials. Instruction sheets are available at www.nvent.com and from your nVent customer service representative. Improper installation, misuse, misapplication or other failure to completely follow nVent's instructions and warnings may cause product malfunction, property damage, serious bodily injury and death and/or void your warranty.

North America

+1.800.753.9221

Option 1 – Customer Care

Option 2 – Technical

Support

Europe

Netherlands:

+31 800-0200135

France:

+33 800 901 793

Europe

Germany:

800 1890272

Other Countries:

+31 13 5835404

APAC

Shanghai:

+ 86 21 2412 1618/19

Sydney:

+61 2 9751 8500



Our powerful portfolio of brands:

CADDY ERICO HOFFMAN ILSCO SCHROFF TRACHTE

