

Industrial Stack Base with Stud, Cross Horizontal Cable Run



FEATURES

Cast air terminal base for use with horizontal conductor runs

For use with expansion anchors

SPECIFICATIONS

Conductor Size, UL: Class 2 (4/0 Max)

Material: Copper

Table 1/2

Catalog Number	Finish	Thread Size 1 (TS1)	Thread Size 2 (TS2)	Thread Length (TL)	Depth (D)	Height (H)
LPC437SH	Bare	5/8" UNC	1/2" UNC	22.22mm	74.61mm	53.98 mm
LPC437LG	Bare	5/8" UNC	1/2" UNC	38.1mm	74.61mm	53.98 mm
LPLC437SH	Lead Covered	5/8" UNC	1/2" UNC	22.22mm	74.61mm	53.98 mm
LPLC437LG	Lead Covered	5/8" UNC	1/2" UNC	38.1mm	74.61mm	53.98 mm

Table 2/2

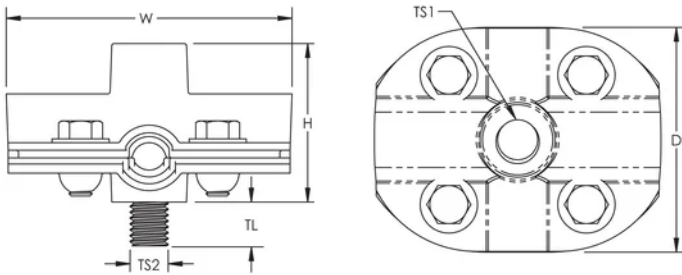
Catalog Number	Width (W)	Unit Weight
LPC437SH	95.25 mm	0.68 kg
LPC437LG	95.25 mm	0.7 kg
LPLC437SH	95.25 mm	1.61 kg

Catalog Number	Width (W)	Unit Weight
LPLC437LG	95.25 mm	1.65 kg

ADDITIONAL PRODUCT DETAILS

Where applicable, lead covering thickness is a minimum of 1/16" (1.59 mm) and is not included in the stated dimensions.

DIAGRAMS



WARNING

nVent products shall be installed and used only as indicated in nVent's product instruction sheets and training materials. Instruction sheets are available at www.nvent.com and from your nVent customer service representative. Improper installation, misuse, misapplication or other failure to completely follow nVent's instructions and warnings may cause product malfunction, property damage, serious bodily injury and death and/or void your warranty.

⚠ WARNING: This product can expose you to chemicals including lead, which is known to the State of California to cause cancer and birth defects or other reproductive harm. For more information go to www.P65Warnings.ca.gov.

North America

+1.800.753.9221
Option 1 – Customer Care
Option 2 – Technical
Support

Europe

Netherlands:
+31 800-0200135
France:
+33 800 901 793

Europe

Germany:
800 1890272
Other Countries:
+31 13 5835404

APAC

Shanghai:
+ 86 21 2412 1618/19
Sydney:
+61 2 9751 8500



Our powerful portfolio of brands:

CADDY ERICO HOFFMAN ILSCO SCHROFF TRACHTE