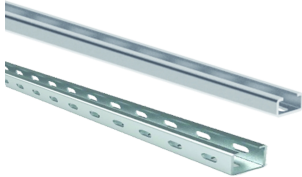


## Mounting Rail, CP

This mounting rail can be cut to size and is ideal when components are fixed with sliding nuts.



### FEATURES

---

Description: Installation profile with and without 25 mm hole pattern. Add GLM sliding nuts for easy installation of components.

Material: Galvanized steel.

Pack quantity: 10 x 2 m.

## SPECIFICATIONS

---

**Thickness:** 1.5mm  
**Finish:** Galvanized  
**Material:** Mild Steel

Table 1/1

Catalog Number	Article Number	Height	Width	Depth	Holes Included
CP2020U	CP2020U	20mm	20mm	2000mm	No
CP1020U	CP1020U	10mm	20mm	2000mm	No
CP2020H	CP2020H	20mm	20mm	2000mm	Yes
CP1020H	CP1020H	10mm	20mm	2000mm	Yes
CP2040H	CP2040H	20mm	40mm	2000mm	Yes
CP2040U	CP2040U	20mm	40mm	2000mm	No

## WARNING

---

nVent products shall be installed and used only as indicated in nVent's product instruction sheets and training materials. Instruction sheets are available at [www.nvent.com](http://www.nvent.com) and from your nVent customer service representative. Improper installation, misuse, misapplication or other failure to completely follow nVent's instructions and warnings may cause product malfunction, property damage, serious bodily injury and death and/or void your warranty.



Our powerful portfolio of brands:

**CADDY ERICO HOFFMAN ILSCO SCHROFF TRACHTE**