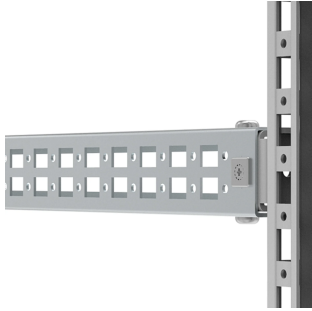


# Mounting profiles, CLPF



The mounting profiles can be fixed in all directions, providing full flexibility for the mounting of accessories, components, and other equipment.

## FEATURES

Description: The CLPF profile system is a 40 mm wide and 25 mm high profile, which can be mounted in all directions on the enclosure's frame. It can also be used in combination with the CLPK and the VB profiles. By turning the profile it can be used as a standard CP20/40 profile in combination with GLM 40/6 sliding nut, to mount installation material which needs adjusting in depth. The profiles, when mounted onto the enclosure's frame are flush with the enclosure's profiles. Two rows of hole patterns for cage nut fixing and self tapping screws are provided. For 90 mm wide profiles two profiles can be mounted next to each other.

Material: Zinc plated steel.

Pack quantity: 4 profiles including snap-line for fixing.

## SPECIFICATIONS

**Thickness:** 1.5mm  
**Material:** Mild Steel  
**Finish:** Zinc Plated

Table 1/1

Catalog Number	Height	Width	Depth	Compatible Enclosure Height	Compatible Enclosure Width	Compatible Enclosure Depth
CLPF2000	40mm	1925mm	25mm	2000mm min	2000mm min	2000mm min
CLPF2200	40mm	2125mm	25mm	2200mm min	2200mm min	2200mm min
CLPF600	40mm	525mm	25mm	600mm min	600mm min	600mm min
CLPF300	40mm	225mm	25mm	300mm min	300mm min	300mm min
CLPF1200	40mm	1125mm	25mm	1200mm min	1200mm min	1200mm min
CLPF1400	40mm	1325mm	25mm	1400mm min	1400mm min	1400mm min
CLPF1600	40mm	1525mm	25mm	1600mm min	1600mm min	1600mm min
CLPF800	40mm	725mm	25mm	800mm min	800mm min	800mm min
CLPF500	40mm	425mm	25mm	500mm min	500mm min	500mm min
CLPF1800	40mm	1725mm	25mm	1800mm min	1800mm min	1800mm min
CLPF1000	40mm	925mm	25mm	1000mm min	1000mm min	1000mm min
CLPF400	40mm	325mm	25mm	400mm min	400mm min	400mm min

## WARNING

nVent products shall be installed and used only as indicated in nVent's product instruction sheets and training materials. Instruction sheets are available at [www.nvent.com](http://www.nvent.com) and from your nVent customer service representative. Improper installation, misuse, misapplication or other failure to completely follow nVent's instructions and warnings may cause product malfunction, property damage, serious bodily injury and death and/or void your warranty.



Our powerful portfolio of brands:

**CADDY ERICO HOFFMAN ILSCO SCHROFF TRACHTE**