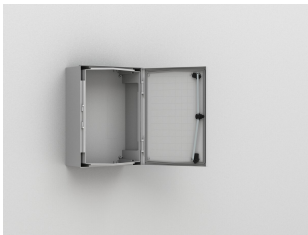


# Polyester Compact Wall Mounted Enclosures, UCP/UCPT



The polyester single door compact wall mounted enclosure range, UCP/UCPT, with a IP 66/IP 54 protection degree, is available off the shelf in many different sizes. Either a plain door or transparent door can be ordered. This enclosure range is well suited for outdoor installations, even when exposed to direct sunlight. The risk for component failure, and with that unnecessary downtime, is eliminated as water and dust are prevented from entering the enclosure.

## INDUSTRY STANDARDS

cULus\_UL Listed

CE UKCA

GOST

## FEATURES

Material: Fibre-glass reinforced polyester. UCPT viewing area: polycarbonate.

Body: Monoblock moulded 3 mm thick. Four holes for direct wall fixing. Without gland plate openings.

Door: Door, with or without window and 180° opening. For UCP/UCPT750 and above, a door support is supplied for easier closing. Sealing is by an injected one piece polyurethane gasket.

Lock: Double-bit 3 mm insert and 90° movement. UCP/UCPT540 and above have three locking points. Other locks are available as an accessory.

Temperature resistance: -25 °C to 70 °C in continuous use (peak temperatures up to 130 °C).

Characteristics: Self extinguishing and halogen free. Double insulated, according to EN61439-1. Rated insulation voltage  $U_i = 1000 \text{ V ac}$  and  $1500 \text{ V dc}$ .

Protection: IP 66, TYPE 4, 4X, 12, 13 for UCP except UPC430 IP65. IP54 TYPE 12 for UCPT. Impact resistance IK 08 (IK 07 for cabinets with transparent doors UCPT).

Approvals: CE, GOST. CSA and cULus\_UL Listed approvals apply to plain door enclosures only. For further approvals, please contact nVent HOFFMAN's sales department.

Finish: RAL 7035, precoloured raw material.

Delivery: Enclosure with door, fixing screws for the mounting plate and a self adhesive rain strip.

Note: UCP320, UCP430 and UCP540 are delivered with the doors inside the packaging, unmounted.

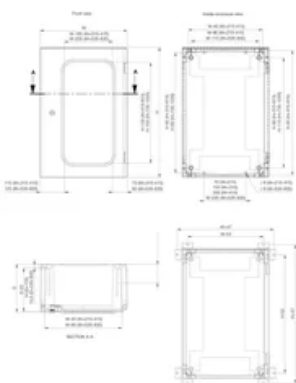
## SPECIFICATIONS

<b>Body Thickness:</b>	3mm
<b>Color:</b>	Light Gray
<b>Material:</b>	Polyester
<b>Color Code:</b>	RAL 7035
<b>Finish:</b>	Smooth

Table 1/1

Catalog Number	Height (H)	Width (W)	Depth (D)	Door Type	Latch Quantity	Weight
UCPT860	835mm	635mm	300mm	Transparent	3	15kg
UCP430	415mm	315mm	170mm	Plain	1	3.9kg
UCP540	515mm	415mm	230mm	Plain	3	6.9kg
UCPT750	735mm	535mm	270mm	Transparent	3	11.8kg
UCP640	615mm	415mm	230mm	Plain	3	7kg
UCP320	315mm	215mm	170mm	Plain	1	2.8kg
UCP750	735mm	535mm	270mm	Plain	3	11.7kg
UCPT640	615mm	415mm	230mm	Transparent	3	7.3kg
UCP860	835mm	635mm	300mm	Plain	3	14.9kg
UCPT540	515mm	415mm	230mm	Transparent	3	7.1kg
UCPT1080	1035mm	835mm	300mm	Transparent	3	22.3kg
UCP1080	1035mm	835mm	300mm	Plain	3	22.8kg
UCPT430	415mm	315mm	170mm	Transparent	1	3.9kg

## DIAGRAMS



## WARNING

nVent products shall be installed and used only as indicated in nVent's product instruction sheets and training materials. Instruction sheets are available at [www.nvent.com](http://www.nvent.com) and from your nVent customer service representative. Improper installation, misuse, misapplication or other failure to completely follow nVent's instructions and warnings may cause product malfunction, property damage, serious bodily injury and death and/or void your warranty.



Our powerful portfolio of brands:

**CADDY ERICO HOFFMAN ILSCO SCHROFF TRACHTE**