

# Telecom Main Grounding Busbar

## Data Solutions



### CERTIFICATIONS



### FEATURES

Meets TIA-607-C and TIA-607-D and conforms to BICSI® recommendations

Complies with NEMA® standards

Accepts two hole lugs with 5/16" or 7/16" bolt holes (hardware not included)

Telecom grounding busbar splice kits are available to extend the length of the busbar

### SPECIFICATIONS

- Thickness (T):** 6.35mm
- Width (W):** 101.6mm
- Material:** Copper

Table 1/2

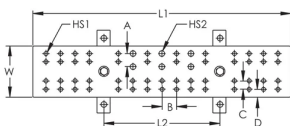
Catalog Number	Tin Plating	Length 1 (L1)	Length 2 (L2)	Hole Size 1 Number of Pairs	Hole Size 2 Number of Pairs	A

TMGBA29L41P	No	737mm	457mm	41	5	25.4mm
TMGBA20L27PT	Yes	508mm	229mm	27	3	25.4mm
TMGBA12L15P	No	305mm	229mm	15	3	25.4mm
TMGBA29L41PT	Yes	737mm	457mm	41	5	25.4mm
TMGBA18L23P	No	451mm	229mm	23	3	25.4mm
TMGBA12L15PT	Yes	305mm	229mm	15	3	25.4mm
TMGBA16L19P	No	394mm	229mm	19	3	25.4mm
TMGBA18L23PT	Yes	451mm	229mm	23	3	25.4mm
TMGBA24L33P	No	610mm	457mm	33	5	25.4mm
TMGBA16L19PT	Yes	394mm	229mm	19	3	25.4mm
TMGBA24L33PT	Yes	610mm	457mm	33	5	25.4mm
TMGBA20L27P	No	508mm	229mm	27	3	25.4mm

Table 2/2

Catalog Number	B	C	D
TMGBA29L41P	28.6mm	15.9mm	15.9mm
TMGBA20L27PT	28.6mm	15.9mm	15.9mm
TMGBA12L15P	28.6mm	15.9mm	15.9mm
TMGBA29L41PT	28.6mm	15.9mm	15.9mm
TMGBA18L23P	28.6mm	15.9mm	15.9mm
TMGBA12L15PT	28.6mm	15.9mm	15.9mm
TMGBA16L19P	28.6mm	15.9mm	15.9mm
TMGBA18L23PT	28.6mm	15.9mm	15.9mm
TMGBA24L33P	28.6mm	15.9mm	15.9mm
TMGBA16L19PT	28.6mm	15.9mm	15.9mm
TMGBA24L33PT	28.6mm	15.9mm	15.9mm
TMGBA20L27P	28.6mm	15.9mm	15.9mm

## DIAGRAMS



## WARNING

---

nVent products shall be installed and used only as indicated in nVent's product instruction sheets and training materials. Instruction sheets are available at [www.nvent.com](http://www.nvent.com) and from your nVent customer service representative. Improper installation, misuse, misapplication or other failure to completely follow nVent's instructions and warnings may cause product malfunction, property damage, serious bodily injury and death and/or void your warranty.



Our powerful portfolio of brands:

**CADDY   ERICO   HOFFMAN   ILSCO   SCHROFF   TRACHTE**