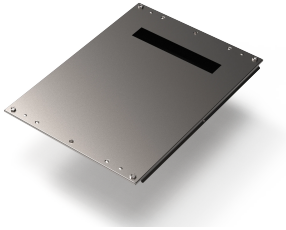


# Varistar CP Base Plate With Cable Entry

Varistar CP Base Plate for Rear Cable Ducting, plain for IP 55 or EMC applications.



## FEATURES

Installation from outside

Cutout at rear

60 mm deep

Cable ducting with IP 55 / EMC gasket

## SPECIFICATIONS

**Product Type:** Cabinet/Rack Base

**Material:** Steel

Table 1/2

Catalog Number	Width	Depth	Protection Rating	Package Quantity	Color	Color Code
21630-645	600mm	1000mm		1		
21630-649	800mm	800mm		1		
21630-835	800mm	1000mm		1		
21630-829	600mm	1000mm	IP20	1		
21630-831	600mm	1200mm	IP20	1		
21630-644	600mm	900mm		1		
21630-826	600mm	600mm	IP20	1		
21630-834	800mm	900mm	IP20	1		
21630-701	600mm	900mm		1	Black Grey	RAL 7021

Catalog Number	Width	Depth	Protection Rating	Package Quantity	Color	Color Code
21630-646	600mm	1100mm		1		
21630-653	800mm	1200mm		1		
21630-700	600mm	800mm		1	Black Grey	RAL 7021
21630-833	800mm	800mm	IP20	1		
21630-827	600mm	800mm	IP20	1		
21630-650	800mm	900mm		1		
21630-699	600mm	600mm		1	Black Grey	RAL 7021
21630-698	600mm	300mm		1	Black Grey	RAL 7021
21630-832	800mm	600mm	IP20	1		
21630-828	600mm	900mm	IP20	1		
21630-651	800mm	1000mm		1		

Table 2/2

Catalog Number	Width	Depth	Protection Rating	Package Quantity	Color	Color Code
21630-710	800mm	1200mm		1	Black Grey	RAL 7021
21630-652	800mm	1100mm		1		
21630-642	600mm	600mm		1		
21630-707	800mm	900mm		1	Black Grey	RAL 7021
21630-837	800mm	1200mm	IP20	1		
21630-708	800mm	1000mm		1	Black Grey	RAL 7021
21630-830	600mm	1100mm	IP20	1		
21630-706	800mm	800mm		1	Black Grey	RAL 7021
21630-643	600mm	800mm		1		
21630-705	800mm	600mm		1	Black Grey	RAL 7021
21630-836	800mm	1100mm	IP20	1		
21630-709	800mm	1100mm		1	Black Grey	RAL 7021
21630-704	600mm	1200mm		1	Black Grey	RAL 7021
21630-648	800mm	600mm		1		
21630-703	600mm	1100mm		1	Black Grey	RAL 7021
21630-647	600mm	1200mm		1		
21630-702	600mm	1000mm		1	Black Grey	RAL 7021

Table 1/2

Catalog Number	Complies With	Finish	Works With
----------------	---------------	--------	------------

21630-645		Hot-Dip Galvanized	
21630-649		Hot-Dip Galvanized	
21630-835	IEC 61587-1, IEC 61587-3	Hot-Dip Galvanized	Varistar CP
21630-829	IEC 61587-1, IEC 61587-3	Hot-Dip Galvanized	Varistar CP
21630-831	IEC 61587-1, IEC 61587-3	Hot-Dip Galvanized	Varistar CP
21630-644		Hot-Dip Galvanized	
21630-826	IEC 61587-1, IEC 61587-3	Hot-Dip Galvanized	Varistar CP
21630-834	IEC 61587-1, IEC 61587-3	Hot-Dip Galvanized	Varistar CP
21630-701			
21630-646		Hot-Dip Galvanized	
21630-653		Hot-Dip Galvanized	
21630-700			
21630-833	IEC 61587-1, IEC 61587-3	Hot-Dip Galvanized	Varistar CP
21630-827	IEC 61587-1, IEC 61587-3	Hot-Dip Galvanized	Varistar CP
21630-650		Hot-Dip Galvanized	
21630-699			
21630-698			
21630-832	IEC 61587-1, IEC 61587-3	Hot-Dip Galvanized	Varistar CP
21630-828	IEC 61587-1, IEC 61587-3	Hot-Dip Galvanized	Varistar CP
21630-651		Hot-Dip Galvanized	

Table 2/2

Catalog Number	Complies With	Finish	Works With
21630-710			
21630-652		Hot-Dip Galvanized	
21630-642		Hot-Dip Galvanized	
21630-707			
21630-837	IEC 61587-1, IEC 61587-3	Hot-Dip Galvanized	Varistar CP
21630-708			
21630-830	IEC 61587-1, IEC 61587-3	Hot-Dip Galvanized	Varistar CP
21630-706			
21630-643		Hot-Dip Galvanized	
21630-705			
21630-836	IEC 61587-1, IEC 61587-3	Hot-Dip Galvanized	Varistar CP
21630-709			
21630-704			

Catalog Number	Complies With	Finish	Works With
21630-648		Hot-Dip Galvanized	
21630-703			
21630-647		Hot-Dip Galvanized	
21630-702			

## ADDITIONAL PRODUCT DETAILS

Varistar CP Base Plate for Rear Cable Ducting, plain for IP 55 or EMC applications.

Please purchase the grounding kit separately.

## WARNING

nVent products shall be installed and used only as indicated in nVent's product instruction sheets and training materials. Instruction sheets are available at [www.nvent.com](http://www.nvent.com) and from your nVent customer service representative. Improper installation, misuse, misapplication or other failure to completely follow nVent's instructions and warnings may cause product malfunction, property damage, serious bodily injury and death and/or void your warranty.

### North America

All locations  
+1.763.422.2661  
Chat with us:  
[nvent.com/schroff](http://nvent.com/schroff)

### Europe

Straubenhardt, Germany  
+49.7082.794.0  
Betschdorf, France  
+33.3.88.90.64.90  
Warsaw, Poland  
+48.22.209.98.35  
Assago, Italy  
+39.02.932.7141  
Chat with us:  
[nvent.com/schroff](http://nvent.com/schroff)

### Asia

Shanghai, China  
+86.21.2412.6943  
Qingdao, China  
+86.532.8771.6101  
Singapore  
+65.6768.5800  
Shin-Yokohama, Japan  
+81.45.476.0271  
Chat with us:  
[nvent.com/schroff](http://nvent.com/schroff)

### Middle East & India

Dubai, United Arab Emirates  
+971.4.378.1700  
Bangalore, India  
+91.80.6715.2001  
Istanbul, Turkey  
+90.216.250.7374  
Chat with us:  
[nvent.com/schroff](http://nvent.com/schroff)



Our powerful portfolio of brands:

**CADDY ERICO HOFFMAN ILSCO SCHROFF TRACHTE**