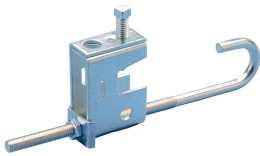


BC11/BC12 Multi-Function Clamp with J-Bolt



FEATURES

Structural attachment to beams to support threaded rod

J-bolt provides additional stability in high vibration environments

SPECIFICATIONS

Finish: Electrogalvanized

Material: Steel

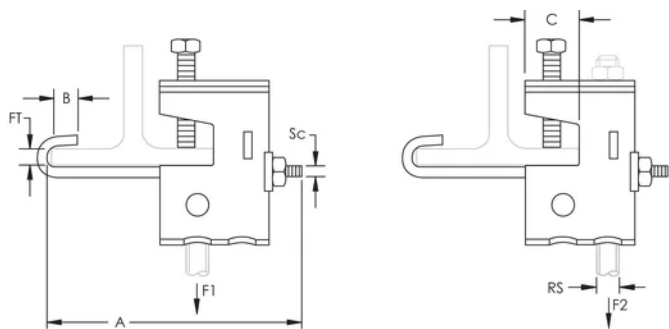
Table 1/1

Catalog Number	Flange Thickness (FT)	A	B	C	Static Load 1 (F1)	Static Load 2 (F2)
BC120000EG	19.1 mm Max	317.5 mm	25.4 mm	25.4 mm	2200N	1334N
BC110000EG	19.1 mm Max	215.9 mm	25.4 mm	25.4 mm	2200N	1334N

ADDITIONAL PRODUCT DETAILS

Setscrew must be tightened and torqued onto the sloped side of the I-beam.

DIAGRAMS



WARNING

nVent products shall be installed and used only as indicated in nVent's product instruction sheets and training materials. Instruction sheets are available at www.nvent.com and from your nVent customer service representative. Improper installation, misuse, misapplication or other failure to completely follow nVent's instructions and warnings may cause product malfunction, property damage, serious bodily injury and death and/or void your warranty.

North America

+1.800.753.9221

Option 1 – Customer Care

Option 2 – Technical

Support

Europe

Netherlands:

+31 800-0200135

France:

+33 800 901 793

Europe

Germany:

800 1890272

Other Countries:

+31 13 5835404

APAC

Shanghai:

+ 86 21 2412 1618/19

Sydney:

+61 2 9751 8500



Our powerful portfolio of brands:

CADDY

ERICO

HOFFMAN

ILSCO

SCHROFF

TRACHTE

