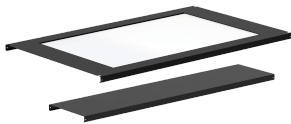


Window Ceiling Panel, fits 300x1200mm, Black, Steel

Data Solutions

CATALOG NUMBER

PCP312



Window Ceiling Panels have easily modified, .22-inch (6 mm) polycarbonate panels to accommodate local fire-suppression codes. Overhead window panel made of .22-in. polycarbonate.

FEATURES

Frame made of 16 gauge steel

Overhead window panel made of .22-inch polycarbonate

Sealed containment, Window Ceiling Panels have easily modified .22-in. polycarbonate panels to accommodate local firesuppression codes (sprinkler heads)

Tool-less Ceiling Panels are easy to install and remove for cleaning and provide above-the-cabinet access to cables, equipment and systems

Clear, transparent door and roof panels provide maximum light to aisleway

PRODUCT ATTRIBUTES

Article Number: 38766

Height: 143mm

Width: 1309mm

Depth: 297mm

Material: Mild Steel

Finish: Powder Coated

Color: Jet Black

Color Code: RAL 9005

Thickness: 1.52mm

Aisle Width: 1219mm

WARNING

nVent products shall be installed and used only as indicated in nVent's product instruction sheets and training materials. Instruction sheets are available at www.nvent.com and from your nVent customer service representative. Improper installation, misuse, misapplication or other failure to completely follow nVent's instructions and warnings may cause product malfunction, property damage, serious bodily injury and death and/or void your warranty.



Our powerful portfolio of brands:

CADDY ERICO HOFFMAN ILSCO SCHROFF TRACHTE