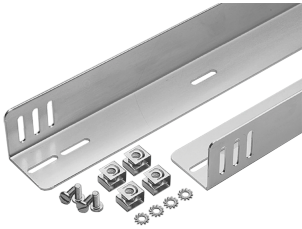


## Chassis Guides



Guides mount between two pairs of rack-mounting angles that have accessory mounting legs. Guides and mounting hardware are plated. (XSFG mount on one pair of Type RA rack-mounting angles that have accessory mounting legs.)

### FEATURES

---

Guides mount between two pairs of rack angles, with slotted holes provided for vertical or lateral adjustment

Furnished in pairs, with mounting hardware supplied

XSFG mount on one pair of Type RA rack-mounting angles that have accessory mounting legs

## SPECIFICATIONS

Table 1/1

Catalog Number	Article Number	Material	Finish	Thickness	Rack Units	Length
AG1U5	12430	Mild Steel	Plated	1.9mm	1U	381mm
AG1U6	12410	Mild Steel	Plated	1.9mm	1U	533.4mm
AG1U8	12420	Mild Steel	Plated	1.9mm	1U	660.4mm

## ADDITIONAL PRODUCT DETAILS

One rack unit = 1.75 in. (45 mm)

Use with A72H3124FS. Requires two sets of U-Style (type RA) rack-mount angles for installation.

## WARNING

nVent products shall be installed and used only as indicated in nVent's product instruction sheets and training materials. Instruction sheets are available at [www.nvent.com](http://www.nvent.com) and from your nVent customer service representative. Improper installation, misuse, misapplication or other failure to completely follow nVent's instructions and warnings may cause product malfunction, property damage, serious bodily injury and death and/or void your warranty.



Our powerful portfolio of brands:

**CADDY ERICO HOFFMAN ILSCO SCHROFF TRACHTE**