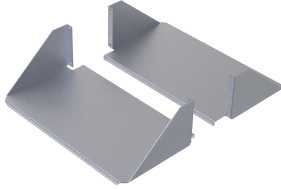


Double-Sided Solid Aluminum Shelf



The Double-Sided Solid Aluminum Shelf mounts on 19-in. open frame rack. It consists of two shelves mounted on each side of the open-frame rack to form a double-sided shelf. It is a lighter weight solution compared to the steel version. This system uses 4U rack space and the maximum load rating is 100 lb. (45.4 kg) per side, 200 lb. (90.7 kg) total.

FEATURES

The Double-Sided Solid Aluminum Shelf mounts on 19-in. open frame rack

It consists of two shelves mounted on each side of the open-frame rack to form a double-sided shelf

It is a lighter weight solution compared to the steel version

This system uses 4U rack space and the maximum load rating is 100 lb. (45.4 kg) per side, 200 lb. (90.7 kg) total

SPECIFICATIONS

Table 1/1

Catalog Number	Article Number	Material	Finish	Thickness	Rack Units	Height
ESHDA19	10248	Aluminum	Brushed	2mm	4U	143mm

WARNING

nVent products shall be installed and used only as indicated in nVent's product instruction sheets and training materials. Instruction sheets are available at www.nvent.com and from your nVent customer service representative. Improper installation, misuse, misapplication or other failure to completely follow nVent's instructions and warnings may cause product malfunction, property damage, serious bodily injury and death and/or void your warranty.



Our powerful portfolio of brands:

CADDY ERICO HOFFMAN ILSCO SCHROFF TRACHTE