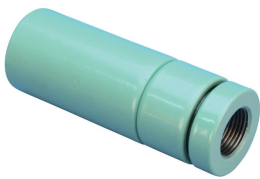


P9 Position Transition Coupler, Coated, 28 mm, 25 mm, #9, #8, 30M, 25M

CATALOG NUMBER

EL2825P9ES



Coated reinforcing bar is used in place of plain reinforcing bars to protect against corrosion. Typical applications include bridges, parking structures, pavement, marine structures and repair work. nVent LENTON couplers and mechanical anchors are available in multiple coatings to meet specific job requirements.

FEATURES

Used to splice different diameter bars

Designed to splice two curved, bent or straight bars, when neither bar can be rotated and where the ongoing bar is free to move in its axial direction

PRODUCT ATTRIBUTES

Material: Steel

Finish: Epoxy Coated

Finish Standard: ASTM® A775/A775M and AASHTO M284

100% U.S. Domestic Content: Yes

Rebar Size, Metric: 28 mm; 25 mm

Rebar Size, US: #9;#8

Rebar Size, Canada: 30M;25M

Diameter (Ø): 64 mm

Length 1 (L1): 129 mm

Length 2 (L2): 144 mm

Bar Depth 1 (BD1): 38mm

Bar Depth 2 (BD2): 35mm

Bar Gap 1 (BG1): 56mm

Bar Gap 2 (BG2): 72mm

Coupler Body (CB): 90mm

Unit Weight: 2.77 kg

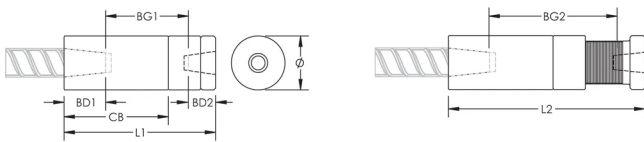
Designed to Meet: AASHTO;ABNT NBR 8548:1984;ACI 318 Type 1 (125% Specified Yield);ACI 318 Type 2 (Specified Tensile);ACI 349;ACI 359;AS3600

Package Quantity: 6

ADDITIONAL PRODUCT DETAILS

Bar dimensions and weights listed may vary by region. Coupler sizes not shown may be available by special order. Contact your nVent LENTON representative for more information.

DIAGRAMS



WARNING

nVent products shall be installed and used only as indicated in nVent's product instruction sheets and training materials. Instruction sheets are available at www.nvent.com and from your nVent customer service representative. Improper installation, misuse, misapplication or other failure to completely follow nVent's instructions and warnings may cause product malfunction, property damage, serious bodily injury and death and/or void your warranty.

North America

+1.800.753.9221

Option 1 – Customer Care

Option 2 – Technical

Support

Europe

Netherlands:

+31 800-0200135

France:

+33 800 901 793

Europe

Germany:

800 1890272

Other Countries:

+31 13 5835404

APAC

Shanghai:

+ 86 21 2412 1618/19

Sydney:

+61 2 9751 8500



Our powerful portfolio of brands:

CADDY

ERICO

HOFFMAN

ILSCO

SCHROFF

TRACHTE