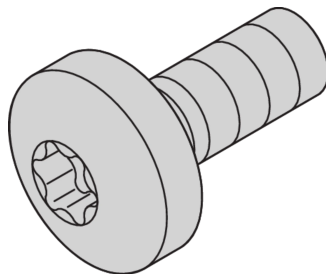
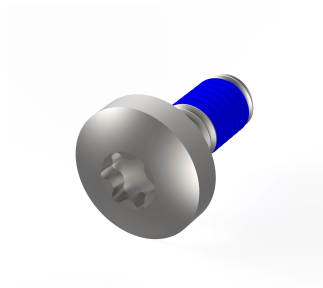


Assembly Parts for Rugged Components, Panhead Screw with Thread-locking Compound, Torx, M4 x 10

CATALOG NUMBER

24566-103



Assembly parts with thread-locking compound for rugged Side Panel, horizontal rail, cover plates, rear angle.

CERTIFICATIONS



FEATURES

Screws for the following fixings: Rugged side panel - horizontal rail, Rugged side panel - cover plate, Rugged side panel - rear angle

PRODUCT ATTRIBUTES

Type: Panhead Screw

Length: 10mm

Package Quantity: 100

Thread Size: M4

Material: Stainless Steel

Product Family: EuropacPRO

Product Type: Assembly Kit

Works With: Subracks

Net Weight: 0.19kg

WARNING

nVent products shall be installed and used only as indicated in nVent's product instruction sheets and training materials. Instruction sheets are available at www.nvent.com and from your nVent customer service representative. Improper installation, misuse, misapplication or other failure to completely follow nVent's instructions and warnings may cause product malfunction, property damage, serious bodily injury and death and/or void your warranty.

North America

All locations
+1.763.422.2661
Chat with us:
nvent.com/schroff

Europe

Straubenhardt, Germany
+49.7082.794.0
Betschdorf, France
+33.3.88.90.64.90
Warsaw, Poland
+48.22.209.98.35
Assago, Italy
+39.02.932.7141
Chat with us:
nvent.com/schroff

Asia

Shanghai, China
+86.21.2412.6943
Qingdao, China
+86.532.8771.6101
Singapore
+65.6768.5800
Shin-Yokohama, Japan
+81.45.476.0271
Chat with us:
nvent.com/schroff

Middle East & India

Dubai, United Arab
Emirates
+971.4.378.1700
Bangalore, India
+91.80.6715.2001
Istanbul, Turkey
+90.216.250.7374
Chat with us:
nvent.com/schroff



Our powerful portfolio of brands:

CADDY ERICO HOFFMAN ILSCO SCHROFF TRACHTE