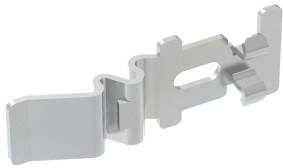


# PEMSA Wire Basket Tray Quick Coupler

## Data Solutions



### CERTIFICATIONS



### FEATURES

Easy to use, quick connect feature

No additional hardware

Works with wide range of tray sizes and configurations

IEC 61537 load rating and earthing compliant

### SPECIFICATIONS

**Finish:** Electrogalvanized

**Material:** Steel

Table 1/2

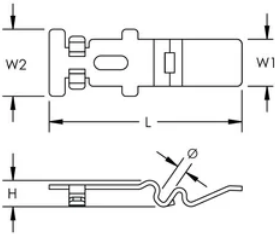
| Catalog Number | Article Number | Color | Length (L) | Width 1 (W1) | Width 2 (W2) | Height (H) |
|----------------|----------------|-------|------------|--------------|--------------|------------|
| WBTQSPL45EG    | 820720         |       | 97mm       | 23.5mm       | 33.5mm       | 13mm       |
| WBTQSPL45BG    | 820721         | Black | 97mm       | 23.5mm       | 33.5mm       | 13mm       |

| Catalog Number | Article Number | Color | Length (L) | Width 1 (W1) | Width 2 (W2) | Height (H) |
|----------------|----------------|-------|------------|--------------|--------------|------------|
| WBTQSPL5BG     | 820723         | Black | 97mm       | 23.5mm       | 33.5mm       | 13mm       |
| WBTQSPL5EG     | 820722         |       | 97mm       | 23.5mm       | 33.5mm       | 13mm       |

Table 2/2

| Catalog Number | Article Number | Diameter (Ø) |
|----------------|----------------|--------------|
| WBTQSPL45EG    | 820720         | 4 – 4.5mm    |
| WBTQSPL45BG    | 820721         | 4 – 4.5mm    |
| WBTQSPL5BG     | 820723         | 5mm          |
| WBTQSPL5EG     | 820722         | 5mm          |

## DIAGRAMS



## WARNING

nVent products shall be installed and used only as indicated in nVent's product instruction sheets and training materials. Instruction sheets are available at [www.nvent.com](http://www.nvent.com) and from your nVent customer service representative. Improper installation, misuse, misapplication or other failure to completely follow nVent's instructions and warnings may cause product malfunction, property damage, serious bodily injury and death and/or void your warranty.



Our powerful portfolio of brands:

**CADDY ERICO HOFFMAN ILSCO SCHROFF TRACHTE**