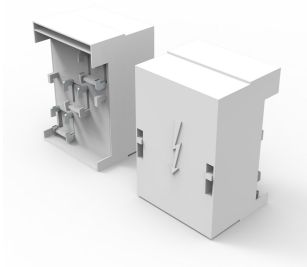


# Connection Terminal Plate

Connection terminal plate for bigger cables.



## FEATURES

---

Description: Connection terminal plate, 3-pole, with cover cap.

For busbars: 20, 25, 30 × 5, 10

Rated voltage: 690 V.

Width: 135

Pack quantity: 1 pc.

Approvals: GL

## SPECIFICATIONS

Table 1/1

| Catalog Number | Height | Width | Depth | Enclosure Material | Product Family          | Material |
|----------------|--------|-------|-------|--------------------|-------------------------|----------|
| 01199          | 150mm  | 135mm | 100mm | Plastic            | IEC General Accessories | Plastic  |
| 01753          | 150mm  | 135mm | 100mm | Plastic            | IEC General Accessories | Plastic  |
| 01754          | 150mm  | 135mm | 100mm | Plastic            | IEC General Accessories | Plastic  |

## WARNING

nVent products shall be installed and used only as indicated in nVent's product instruction sheets and training materials. Instruction sheets are available at [www.nvent.com](http://www.nvent.com) and from your nVent customer service representative. Improper installation, misuse, misapplication or other failure to completely follow nVent's instructions and warnings may cause product malfunction, property damage, serious bodily injury and death and/or void your warranty.



Our powerful portfolio of brands:

**CADDY ERICO HOFFMAN ILSCO SCHROFF TRACHTE**