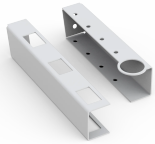


# Wire tool holder, WTH



A flexible, one-stop solution for optimizing your wiring workstation and increasing the efficiency of the manual assemblies, wire tool holders safely and securely store handheld cable assembly tools.

## FEATURES

---

Delivery: Set of 2 wire tool holders, assembly kit

Material: Mild steel

Finish: RAL 7024 structured powder coating

## SPECIFICATIONS

Table 1/1

Catalog Number	Height	Width	Depth	Product Family	Material	Finish
WTH2	100mm	24mm	25mm	Panel Shop Automation	Mild Steel	Powder Coated

## WARNING

nVent products shall be installed and used only as indicated in nVent's product instruction sheets and training materials. Instruction sheets are available at [www.nvent.com](http://www.nvent.com) and from your nVent customer service representative. Improper installation, misuse, misapplication or other failure to completely follow nVent's instructions and warnings may cause product malfunction, property damage, serious bodily injury and death and/or void your warranty.



Our powerful portfolio of brands:

**CADDY ERICO HOFFMAN ILSCO SCHROFF TRACHTE**