

# S13 Metric Parallel Bolt Coupler, Plain, Worldwide Design, 28 mm, #9, 30M, 50 mm dia, 64 mm, M33 Thread

## CATALOG NUMBER

**EL28S13N**



## CERTIFICATIONS



## FEATURES

Provides continuity between reinforcing bar and ISO® 965 metric all-thread rod or bolts

May be used to anchor load-bearing equipment to foundations, columns or walls

Machined from non-weldable grades of material, but can be tack welded

## PRODUCT ATTRIBUTES

Material: Steel

Finish: Plain

Design Version: Worldwide (Globally Available Materials)

Rebar Size, Metric: 28 mm

Rebar Size, US: #9

Rebar Size, Canada: 30M

Diameter (Ø): 50 mm

Length (L): 115mm

A: 64 mm

Bar Depth (BD): 42mm

Thread Size (TS): M33

Thread Depth (TD): 37mm

Unit Weight: 1.16 kg

Designed to Meet: AASHTO;ABNT NBR 8548:1984;ACI 318 Type 1 (125% Specified Yield);ACI 318 Type 2 (Specified Tensile);ACI 349;ACI 359;AS3600

Package Quantity: 21

## **ADDITIONAL PRODUCT DETAILS**

---

Bar dimensions and weights listed may vary by region. Coupler sizes not shown may be available by special order. Contact your nVent LENTON representative for more information.

Coupler supplied without bolt.

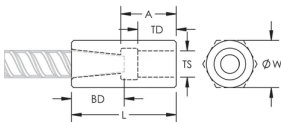
Bolt may be replaced by threaded rod of same class/grade.

All calculations based on a minimum bolt engagement equal to Thread Depth (TD).

System Capacity based on bolt to coupler connection. For rebar to coupler connection, refer to applicable building codes and approvals or contact your nVent LENTON representative.

| Bolt-to-Coupler Capacity (kN) |           |           |           |            |            |
|-------------------------------|-----------|-----------|-----------|------------|------------|
| Part Number                   | Grade 4.8 | Grade 5.8 | Grade 8.8 | Grade 10.9 | Grade 12.9 |
| EL10S13N                      | 33.7      | 42.1      | 67.4      | 67.7       | 67.7       |
| EL12S13AN                     | 224.2     | 280.3     | 448.5     | 526.3      | 526.3      |
| EL12S13N                      | 62.7      | 78.3      | 109.8     | 109.8      | 109.8      |
| EL14S13N                      | 77.0      | 96.2      | 154.0     | 192.5      | 193.4      |
| EL16S13N                      | 97.9      | 122.4     | 162.0     | 162.0      | 162.0      |
| EL18S13N                      | 121.4     | 151.7     | 242.7     | 303.4      | 364.1      |
| EL20S13AN                     | 121.4     | 151.7     | 242.7     | 303.4      | 356.8      |
| EL20S13BN                     | 97.9      | 122.4     | 195.8     | 244.8      | 289.4      |
| EL20S13N                      | 141.0     | 176.3     | 282.0     | 332.3      | 332.3      |
| EL22S13N                      | 183.8     | 229.7     | 367.5     | 449.9      | 449.9      |
| EL25S13AN                     | 141.0     | 176.3     | 282.0     | 352.5      | 422.9      |
| EL25S13BN                     | 97.9      | 122.4     | 195.8     | 244.8      | 293.8      |
| EL25S13N                      | 224.2     | 280.3     | 448.5     | 560.5      | 560.5      |
| EL28S13N                      | 277.4     | 346.8     | 554.8     | 693.6      | 728.0      |
| EL30S13N                      | 326.7     | 408.4     | 653.4     | 816.7      | 890.7      |
| EL32S13AN                     | 224.2     | 280.3     | 448.5     | 560.6      | 672.7      |
| EL32S13N                      | 390.3     | 487.9     | 780.6     | 783.8      | 783.8      |
| EL34S13N                      | 390.3     | 487.9     | 780.6     | 783.8      | 783.8      |
| EL36S13N                      | 448.4     | 560.5     | 896.7     | 1120.9     | 1197.1     |
| EL38S13N                      | 522.4     | 653.0     | 1044.8    | 1054.8     | 1054.8     |
| EL40S13AN                     | 589.3     | 736.6     | 1178.5    | 1312.4     | 1312.4     |
| EL40S13BN                     | 326.7     | 408.4     | 653.4     | 816.7      | 980.1      |
| EL40S13CN                     | 224.2     | 280.3     | 448.5     | 560.6      | 672.7      |
| EL40S13M33N                   | 522.4     | 653.0     | 1044.8    | 1054.8     | 1054.8     |
| EL40S13N                      | 522.4     | 653.0     | 1044.8    | 1054.8     | 1054.8     |
| EL50TS13M33N                  | 812.0     | 1015.0    | 1624.0    | 2030.0     | 2168.3     |
| EL50TS13N                     | 812.0     | 1015.0    | 1624.0    | 2030.0     | 2168.3     |

## DIAGRAMS



## WARNING

nVent products shall be installed and used only as indicated in nVent's product instruction sheets and training materials. Instruction sheets are available at [www.nvent.com](http://www.nvent.com) and from your nVent customer service representative. Improper installation, misuse, misapplication or other failure to completely follow nVent's instructions and warnings may cause product malfunction, property damage, serious bodily injury and death and/or void your warranty.

**North America**

+1.800.753.9221

Option 1 – Customer Care

Option 2 – Technical

Support

**Europe**

Netherlands:

+31 800-0200135

France:

+33 800 901 793

**Europe**

Germany:

800 1890272

Other Countries:

+31 13 5835404

**APAC**

Shanghai:

+ 86 21 2412 1618/19

Sydney:

+61 2 9751 8500



Our powerful portfolio of brands:

**CADDY**

**ERICO**

**HOFFMAN**

**ILSCO**

**SCHROFF**

**TRACHTE**