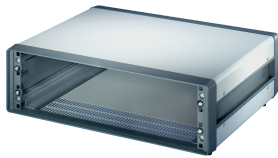


# Comptec 19" Desktop Case, Unshielded



The nVent SCHROFF Comptec case is compatible with a 19" cabinet and is used to house assemblies such as 19" subracks, 19" fan trays or 19" front panels. This case is also typically used for desktop applications.

## CERTIFICATIONS



## FEATURES

Desktop case (pre-fitted)

Unshielded

Ventilation slits in base plate

Front and rear frames in die-cast Al

Top cover, base plate and rear panel in steel

Conforms with DIN EN 62368-1

## SPECIFICATIONS

- Product Type:** Case
- Type:** Case for 19" Subrack and 19" Chassis
- Product Family:** Comptec

Table 1/2

Catalog Number	Rack Height	Height	Rack Width	Depth	Material	Package Quantity
----------------	-------------	--------	------------	-------	----------	------------------

10225-615	6U	286mm	84HP	400mm	Aluminum, Steel	1
10225-670	12U	553mm	84HP	400mm	Aluminum	1
10225-602	4U	198mm	84HP	300mm	Aluminum, Steel	1
10225-667	9U	420mm	84HP	400mm	Aluminum	1
10225-640	9U	420mm	84HP	600mm	Aluminum, Steel	1
10225-638	7U	331mm	84HP	600mm	Aluminum, Steel	1
10225-682	9U	420mm	84HP	500mm	Aluminum	1
10225-637	6U	286mm	84HP	600mm	Aluminum, Steel	1
10225-604	6U	286mm	84HP	300mm	Aluminum, Steel	1
10225-629	9U	420mm	84HP	500mm	Aluminum, Steel	1
10225-627	7U	331mm	84HP	500mm	Aluminum, Steel	1
10225-685	12U	553mm	84HP	500mm	Aluminum	1
10225-626	6U	286mm	84HP	500mm	Aluminum, Steel	1
10225-624	4U	198mm	84HP	500mm	Aluminum, Steel	1
10225-693	9U	420mm	84HP	600mm	Aluminum	1
10225-612	3U	153mm	84HP	400mm	Aluminum, Steel	1
10225-623	3U	153mm	84HP	500mm	Aluminum, Steel	1
10225-601	3U	153mm	84HP	300mm	Aluminum, Steel	1
10225-618	9U	420mm	84HP	400mm	Aluminum, Steel	1
10225-696	12U	553mm	84HP	600mm	Aluminum	1

Table 2/2

Catalog Number	Rack Height	Height	Rack Width	Depth	Material	Package Quantity
10225-616	7U	331mm	84HP	400mm	Aluminum, Steel	1
10225-613	4U	198mm	84HP	400mm	Aluminum, Steel	1

Table 1/2

Catalog Number	Usable Height	Usable Width	Front Frame Construction	Cooling Option	Complies With	EMC Shielding
10225-615	267.6mm	451mm	Single Piece	No	IEC 60297-3-100	No
10225-670	534mm	451mm	Single Piece	No	IEC 60297-3-100	No
10225-602	178.7mm	451mm	Single Piece	No	IEC 60297-3-100	No
10225-667	400.9mm	451mm	Single Piece	No	IEC 60297-3-100	No
10225-640	400.9mm	451mm	Single Piece	No	IEC 60297-3-100	No
10225-638	312mm	451mm	Single Piece	No	IEC 60297-3-100	No
10225-682	400.9mm	451mm	Single Piece	No	IEC 60297-3-100	No
10225-637	267.6mm	451mm	Single Piece	No	IEC 60297-3-100	No
10225-604	267.6mm	451mm	Single Piece	No	IEC 60297-3-100	No
10225-629	400.9mm	451mm	Single Piece	No	IEC 60297-3-100	No
10225-627	312mm	451mm	Single Piece	No	IEC 60297-3-100	No
10225-685	534mm	451mm	Single Piece	No	IEC 60297-3-100	No
10225-626	267.6mm	451mm	Single Piece	No	IEC 60297-3-100	No
10225-624	178.7mm	451mm	Single Piece	No	IEC 60297-3-100	No
10225-693	400.9mm	451mm	Single Piece	No	IEC 60297-3-100	No
10225-612	134.2mm	451mm	Single Piece	No	IEC 60297-3-100	No
10225-623	134.2mm	451mm	Single Piece	No	IEC 60297-3-100	No
10225-601	134.2mm	451mm	Single Piece	No	IEC 60297-3-100	No
10225-618	400.9mm	451mm	Single Piece	No	IEC 60297-3-100	No

Catalog Number	Usable Height	Usable Width	Front Frame Construction	Cooling Option	Complies With	EMC Shielding
10225-696	534mm	451mm	Single Piece	No	IEC 60297-3-100	No

Table 2/2

Catalog Number	Usable Height	Usable Width	Front Frame Construction	Cooling Option	Complies With	EMC Shielding
10225-616	312mm	451mm	Single Piece	No	IEC 60297-3-100	No
10225-613	178.7mm	451mm	Single Piece	No	IEC 60297-3-100	No

Table 1/2

Catalog Number	Finish	Protection Rating	Static Load	Width
10225-615	Powder Coated	IP20	40kg	520mm
10225-670	Powder Coated	IP20	40kg	520mm
10225-602	Powder Coated	IP20	40kg	520mm
10225-667	Powder Coated	IP20	40kg	520mm
10225-640	Powder Coated	IP20	40kg	520mm
10225-638	Powder Coated	IP20	40kg	520mm
10225-682	Powder Coated	IP20	40kg	520mm
10225-637	Powder Coated	IP20	40kg	520mm
10225-604	Powder Coated	IP20	40kg	520mm
10225-629	Powder Coated	IP20	40kg	520mm
10225-627	Powder Coated	IP20	40kg	520mm
10225-685	Powder Coated	IP20	40kg	520mm
10225-626	Powder Coated	IP20	40kg	520mm
10225-624	Powder Coated	IP20	40kg	520mm
10225-693	Powder Coated	IP20	40kg	520mm
10225-612	Powder Coated	IP20	40kg	520mm
10225-623	Powder Coated	IP20	40kg	520mm
10225-601	Powder Coated	IP20	40kg	520mm
10225-618	Powder Coated	IP20	40kg	520mm
10225-696	Powder Coated	IP20	40kg	520mm

Table 2/2

Catalog Number	Finish	Protection Rating	Static Load	Width
10225-616	Powder Coated	IP20	40kg	520mm

Catalog Number	Finish	Protection Rating	Static Load	Width
10225-613	Powder Coated	IP20	40kg	520mm

## WARNING

nVent products shall be installed and used only as indicated in nVent's product instruction sheets and training materials. Instruction sheets are available at [www.nvent.com](http://www.nvent.com) and from your nVent customer service representative. Improper installation, misuse, misapplication or other failure to completely follow nVent's instructions and warnings may cause product malfunction, property damage, serious bodily injury and death and/or void your warranty.

### North America

All locations  
+1.763.422.2661  
Chat with us:  
[nvent.com/schroff](http://nvent.com/schroff)

### Europe

Straubenhardt, Germany  
+49.7082.794.0  
Betschdorf, France  
+33.3.88.90.64.90  
Warsaw, Poland  
+48.22.209.98.35  
Assago, Italy  
+39.02.932.7141  
Chat with us:  
[nvent.com/schroff](http://nvent.com/schroff)

### Asia

Shanghai, China  
+86.21.2412.6943  
Qingdao, China  
+86.532.8771.6101  
Singapore  
+65.6768.5800  
Shin-Yokohama, Japan  
+81.45.476.0271  
Chat with us:  
[nvent.com/schroff](http://nvent.com/schroff)

### Middle East & India

Dubai, United Arab Emirates  
+971.4.378.1700  
Bangalore, India  
+91.80.6715.2001  
Istanbul, Turkey  
+90.216.250.7374  
Chat with us:  
[nvent.com/schroff](http://nvent.com/schroff)



Our powerful portfolio of brands:

**CADDY ERICO HOFFMAN ILSCO SCHROFF TRACHTE**