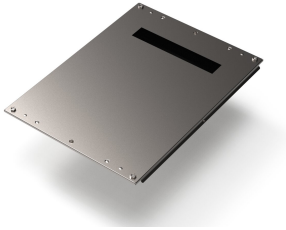


# Varistar CP Base Plate With Cable Entry

Varistar CP Base Plate for Rear Cable Ducting, plain for IP 55 or EMC applications.



## FEATURES

Installation from outside

Cutout at rear

60 mm deep

Cable ducting with IP 55 / EMC gasket

## SPECIFICATIONS

**Product Type:** Cabinet/Rack Base

**Material:** Steel

Table 1/2

| Catalog Number | Width | Depth  | Protection Rating | Package Quantity | Color      | Color Code |
|----------------|-------|--------|-------------------|------------------|------------|------------|
| 21630-645      | 600mm | 1000mm |                   | 1                |            |            |
| 21630-649      | 800mm | 800mm  |                   | 1                |            |            |
| 21630-835      | 800mm | 1000mm |                   | 1                |            |            |
| 21630-829      | 600mm | 1000mm | IP20              | 1                |            |            |
| 21630-831      | 600mm | 1200mm | IP20              | 1                |            |            |
| 21630-644      | 600mm | 900mm  |                   | 1                |            |            |
| 21630-826      | 600mm | 600mm  | IP20              | 1                |            |            |
| 21630-834      | 800mm | 900mm  | IP20              | 1                |            |            |
| 21630-701      | 600mm | 900mm  |                   | 1                | Black Grey | RAL 7021   |

| Catalog Number | Width | Depth  | Protection Rating | Package Quantity | Color      | Color Code |
|----------------|-------|--------|-------------------|------------------|------------|------------|
| 21630-646      | 600mm | 1100mm |                   | 1                |            |            |
| 21630-653      | 800mm | 1200mm |                   | 1                |            |            |
| 21630-700      | 600mm | 800mm  |                   | 1                | Black Grey | RAL 7021   |
| 21630-833      | 800mm | 800mm  | IP20              | 1                |            |            |
| 21630-827      | 600mm | 800mm  | IP20              | 1                |            |            |
| 21630-650      | 800mm | 900mm  |                   | 1                |            |            |
| 21630-699      | 600mm | 600mm  |                   | 1                | Black Grey | RAL 7021   |
| 21630-698      | 600mm | 300mm  |                   | 1                | Black Grey | RAL 7021   |
| 21630-832      | 800mm | 600mm  | IP20              | 1                |            |            |
| 21630-828      | 600mm | 900mm  | IP20              | 1                |            |            |
| 21630-651      | 800mm | 1000mm |                   | 1                |            |            |

Table 2/2

| Catalog Number | Width | Depth  | Protection Rating | Package Quantity | Color      | Color Code |
|----------------|-------|--------|-------------------|------------------|------------|------------|
| 21630-710      | 800mm | 1200mm |                   | 1                | Black Grey | RAL 7021   |
| 21630-652      | 800mm | 1100mm |                   | 1                |            |            |
| 21630-642      | 600mm | 600mm  |                   | 1                |            |            |
| 21630-707      | 800mm | 900mm  |                   | 1                | Black Grey | RAL 7021   |
| 21630-837      | 800mm | 1200mm | IP20              | 1                |            |            |
| 21630-708      | 800mm | 1000mm |                   | 1                | Black Grey | RAL 7021   |
| 21630-830      | 600mm | 1100mm | IP20              | 1                |            |            |
| 21630-706      | 800mm | 800mm  |                   | 1                | Black Grey | RAL 7021   |
| 21630-643      | 600mm | 800mm  |                   | 1                |            |            |
| 21630-705      | 800mm | 600mm  |                   | 1                | Black Grey | RAL 7021   |
| 21630-836      | 800mm | 1100mm | IP20              | 1                |            |            |
| 21630-709      | 800mm | 1100mm |                   | 1                | Black Grey | RAL 7021   |
| 21630-704      | 600mm | 1200mm |                   | 1                | Black Grey | RAL 7021   |
| 21630-648      | 800mm | 600mm  |                   | 1                |            |            |
| 21630-703      | 600mm | 1100mm |                   | 1                | Black Grey | RAL 7021   |
| 21630-647      | 600mm | 1200mm |                   | 1                |            |            |
| 21630-702      | 600mm | 1000mm |                   | 1                | Black Grey | RAL 7021   |

Table 1/2

| Catalog Number | Complies With | Finish | Works With |
|----------------|---------------|--------|------------|
|----------------|---------------|--------|------------|

|           |                          |                    |             |
|-----------|--------------------------|--------------------|-------------|
| 21630-645 |                          | Hot-Dip Galvanized |             |
| 21630-649 |                          | Hot-Dip Galvanized |             |
| 21630-835 | IEC 61587-1, IEC 61587-3 | Hot-Dip Galvanized | Varistar CP |
| 21630-829 | IEC 61587-1, IEC 61587-3 | Hot-Dip Galvanized | Varistar CP |
| 21630-831 | IEC 61587-1, IEC 61587-3 | Hot-Dip Galvanized | Varistar CP |
| 21630-644 |                          | Hot-Dip Galvanized |             |
| 21630-826 | IEC 61587-1, IEC 61587-3 | Hot-Dip Galvanized | Varistar CP |
| 21630-834 | IEC 61587-1, IEC 61587-3 | Hot-Dip Galvanized | Varistar CP |
| 21630-701 |                          |                    |             |
| 21630-646 |                          | Hot-Dip Galvanized |             |
| 21630-653 |                          | Hot-Dip Galvanized |             |
| 21630-700 |                          |                    |             |
| 21630-833 | IEC 61587-1, IEC 61587-3 | Hot-Dip Galvanized | Varistar CP |
| 21630-827 | IEC 61587-1, IEC 61587-3 | Hot-Dip Galvanized | Varistar CP |
| 21630-650 |                          | Hot-Dip Galvanized |             |
| 21630-699 |                          |                    |             |
| 21630-698 |                          |                    |             |
| 21630-832 | IEC 61587-1, IEC 61587-3 | Hot-Dip Galvanized | Varistar CP |
| 21630-828 | IEC 61587-1, IEC 61587-3 | Hot-Dip Galvanized | Varistar CP |
| 21630-651 |                          | Hot-Dip Galvanized |             |

Table 2/2

| Catalog Number | Complies With            | Finish             | Works With  |
|----------------|--------------------------|--------------------|-------------|
| 21630-710      |                          |                    |             |
| 21630-652      |                          | Hot-Dip Galvanized |             |
| 21630-642      |                          | Hot-Dip Galvanized |             |
| 21630-707      |                          |                    |             |
| 21630-837      | IEC 61587-1, IEC 61587-3 | Hot-Dip Galvanized | Varistar CP |
| 21630-708      |                          |                    |             |
| 21630-830      | IEC 61587-1, IEC 61587-3 | Hot-Dip Galvanized | Varistar CP |
| 21630-706      |                          |                    |             |
| 21630-643      |                          | Hot-Dip Galvanized |             |
| 21630-705      |                          |                    |             |
| 21630-836      | IEC 61587-1, IEC 61587-3 | Hot-Dip Galvanized | Varistar CP |
| 21630-709      |                          |                    |             |
| 21630-704      |                          |                    |             |

| Catalog Number | Complies With | Finish             | Works With |
|----------------|---------------|--------------------|------------|
| 21630-648      |               | Hot-Dip Galvanized |            |
| 21630-703      |               |                    |            |
| 21630-647      |               | Hot-Dip Galvanized |            |
| 21630-702      |               |                    |            |

## ADDITIONAL PRODUCT DETAILS

Varistar CP Base Plate for Rear Cable Ducting, plain for IP 55 or EMC applications.

Please purchase the grounding kit separately.

## WARNING

nVent products shall be installed and used only as indicated in nVent's product instruction sheets and training materials. Instruction sheets are available at [www.nvent.com](http://www.nvent.com) and from your nVent customer service representative. Improper installation, misuse, misapplication or other failure to completely follow nVent's instructions and warnings may cause product malfunction, property damage, serious bodily injury and death and/or void your warranty.

### North America

All locations  
+1.763.422.2661  
Chat with us:  
[nvent.com/schroff](http://nvent.com/schroff)

### Europe

Straubenhardt, Germany  
+49.7082.794.0  
Betschdorf, France  
+33.3.88.90.64.90  
Warsaw, Poland  
+48.22.209.98.35  
Assago, Italy  
+39.02.932.7141  
Chat with us:  
[nvent.com/schroff](http://nvent.com/schroff)

### Asia

Shanghai, China  
+86.21.2412.6943  
Qingdao, China  
+86.532.8771.6101  
Singapore  
+65.6768.5800  
Shin-Yokohama, Japan  
+81.45.476.0271  
Chat with us:  
[nvent.com/schroff](http://nvent.com/schroff)

### Middle East & India

Dubai, United Arab Emirates  
+971.4.378.1700  
Bangalore, India  
+91.80.6715.2001  
Istanbul, Turkey  
+90.216.250.7374  
Chat with us:  
[nvent.com/schroff](http://nvent.com/schroff)



Our powerful portfolio of brands:

**CADDY ERICO HOFFMAN ILSCO SCHROFF TRACHTE**