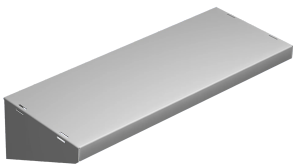


D-Box Shelves

Data Solutions

The D-Box Shelves provide additional storage in 36- and 48-inch (914- and 1219-mm) tall cabinets. Please note the load raint is 75 lb. (34.0 kg)



FEATURES

The D-Box Shelves provide additional storage in 36- and 48-inch (914- and 1219-mm) tall cabinets

Please note the load raint is 75 lb. (34.0 kg)

SPECIFICATIONS

Table 1/2

| Catalog Number | Article Number | Material | Finish | Color | Color Code | Thickness |
|----------------|----------------|------------|---------------|------------|------------|-----------|
| DBSHELF8 | 14534 | Mild Steel | Powder Coated | Light Gray | RAL 7035 | 1.52mm |
| DBSHELF12 | 14535 | Mild Steel | Powder Coated | Light Gray | RAL 7035 | 1.52mm |

Table 2/2

| Catalog Number | Article Number | Length | Depth |
|----------------|----------------|--------|-------|
| DBSHELF8 | 14534 | 484mm | 184mm |
| DBSHELF12 | 14535 | | 281mm |

WARNING

nVent products shall be installed and used only as indicated in nVent's product instruction sheets and training materials. Instruction sheets are available at www.nvent.com and from your nVent customer service representative. Improper installation, misuse, misapplication or other failure to completely follow nVent's instructions and warnings may cause product malfunction, property damage, serious bodily injury and death and/or void your warranty.



Our powerful portfolio of brands:

CADDY ERICO HOFFMAN ILSCO SCHROFF TRACHTE