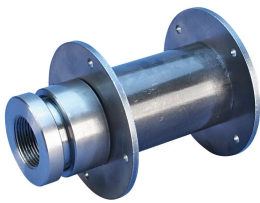


# P8 Position Coupler with Two Form Saving Plates, 802 mm

## CATALOG NUMBER

**EL36S3P83000**



Used in segmental pour applications. The addition of two form saving plates allow the female end of the coupler to be used in keyway applications where the coupler is attached to formwork at both ends. Permanent form saving plates allow easy attachment to the forms, eliminating costly damage to the forms.

## FEATURES

Designed to splice the same diameter bars

Designed to splice two curved, bent or straight bars, when one bar can be rotated and where the ongoing bar is NOT free to move in its axial direction

Adjustability in the female end of the coupler allows the coupler to extend out to meet the taper-threaded reinforcing bar

## PRODUCT ATTRIBUTES

Material: Steel

Finish: Plain

100% U.S. Domestic Content: Yes

Rebar Size, Metric: 36 mm

Rebar Size, US: #11

Rebar Size, Canada: 35M

Diameter 1 (Ø1): 65 mm

Diameter 2 (Ø2): 114 mm

Length 1 (L1): 802 mm

Length 2 (L2): 868 mm

Bar Depth (BD): 68mm

Bar Gap 1 (BG1): 666mm

Bar Gap 2 (BG2): 732mm

Coupler Body (CB): 762mm

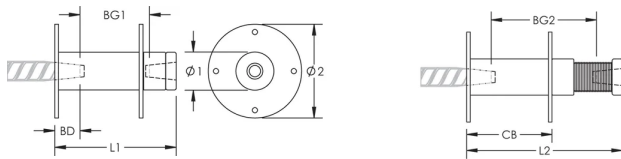
Unit Weight: 19.55 kg

Designed to Meet: AASHTO;ABNT NBR 8548:1984;ACI 318 Type 1 (125% Specified Yield);ACI 318 Type 2 (Specified Tensile);ACI 349;ACI 359;AS3600

## ADDITIONAL PRODUCT DETAILS

Bar dimensions and weights listed may vary by region. Coupler sizes not shown may be available by special order. Contact your nVent LENTON representative for more information.

## DIAGRAMS



## WARNING

nVent products shall be installed and used only as indicated in nVent's product instruction sheets and training materials. Instruction sheets are available at [www.nvent.com](http://www.nvent.com) and from your nVent customer service representative. Improper installation, misuse, misapplication or other failure to completely follow nVent's instructions and warnings may cause product malfunction, property damage, serious bodily injury and death and/or void your warranty.

### North America

+1.800.753.9221

Option 1 – Customer Care

Option 2 – Technical

Support

### Europe

Netherlands:

+31 800-0200135

France:

+33 800 901 793

### Europe

Germany:

800 1890272

Other Countries:

+31 13 5835404

### APAC

Shanghai:

+ 86 21 2412 1618/19

Sydney:

+61 2 9751 8500



Our powerful portfolio of brands:

CADDY

ERICO

HOFFMAN

ILSCO

SCHROFF

TRACHTE