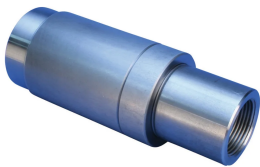


# P9 Position Coupler, Plain, 43 mm, #14, 45M

## CATALOG NUMBER

**EL43TP9N**



## FEATURES

Designed to splice the same diameter bars

Designed to splice two curved, bent or straight bars, when neither bar can be rotated and where the ongoing bar is free to move in its axial direction

## PRODUCT ATTRIBUTES

Material: Steel

Finish: Plain

Rebar Size, Metric: 43 mm

Rebar Size, US: #14

Rebar Size, Canada: 45M

Diameter (Ø): 76 mm

Length 1 (L1): 224 mm

Length 2 (L2): 245 mm

Bar Depth (BD): 56mm

Bar Gap 1 (BG1): 112mm

Bar Gap 2 (BG2): 133mm

Coupler Body (CB): 127mm

Unit Weight: 8.88 kg

Designed to Meet: AASHTO; ABNT NBR 8548:1984; ACI 318 Type 1 (125% Specified Yield); ACI 318 Type 2 (Specified Tensile); ACI 349; ACI 359; AS3600

Package Quantity: 4

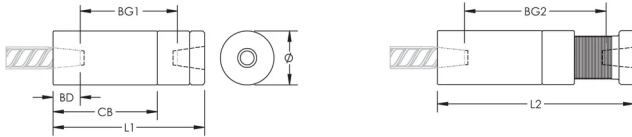
## ADDITIONAL PRODUCT DETAILS

---

Bar dimensions and weights listed may vary by region. Coupler sizes not shown may be available by special order. Contact your nVent LENTON representative for more information.

## DIAGRAMS

---



## WARNING

---

nVent products shall be installed and used only as indicated in nVent's product instruction sheets and training materials. Instruction sheets are available at [www.nvent.com](http://www.nvent.com) and from your nVent customer service representative. Improper installation, misuse, misapplication or other failure to completely follow nVent's instructions and warnings may cause product malfunction, property damage, serious bodily injury and death and/or void your warranty.

### North America

+1.800.753.9221  
Option 1 – Customer Care  
Option 2 – Technical  
Support

### Europe

Netherlands:  
+31 800-0200135  
France:  
+33 800 901 793

### Europe

Germany:  
800 1890272  
Other Countries:  
+31 13 5835404

### APAC

Shanghai:  
+ 86 21 2412 1618/19  
Sydney:  
+61 2 9751 8500



Our powerful portfolio of brands:

**CADDY ERICO HOFFMAN ILSCO SCHROFF TRACHTE**