

Quick Strut Nut with Stud



FEATURES

Provides fast universal attachment of threaded rod and hardware to standard strut profiles

Pre-assembled slide nut ready to use out of the box

Spring retains assembly in place until hardware is tightened

SPECIFICATIONS

Finish: Electrogalvanized

Material: Steel

Table 1/2

Catalog Number	Article Number	Rod Size (RS)	Length 1 (L1)	Length 2 (L2)	A	B
QSNM10040EG	592922	10	22 mm	50 mm	8 mm	4 mm
QSNM8060EG	592914	8	46 mm	70 mm	6 mm	4 mm
QSNM8040EG	592912	8	26 mm	50 mm	6 mm	4 mm
QSNM10060EG	592924	10	42 mm	70 mm	8 mm	4 mm

Table 2/2

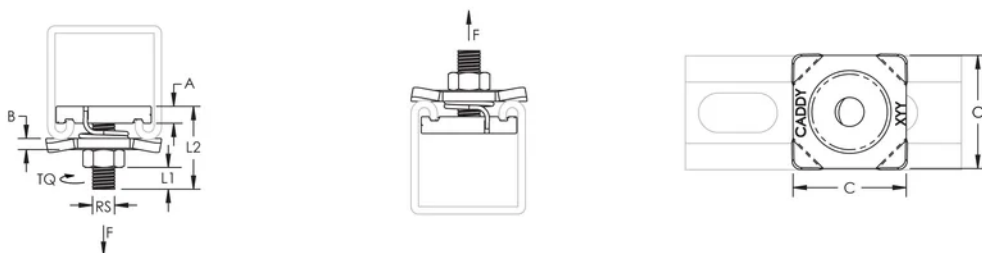
Catalog Number	Article Number	C	Torque (TQ)	Static Load 1 (F1)	Static Load 2 (F2)	Static Load 3 (F3)
QSNM10040EG	592922	41 mm	55 N·m	4400N	4400N	4900N
QSNM8060EG	592914	41 mm	28 N·m	3300N	3300N	3300N
QSNM8040EG	592912	41 mm	28 N·m	3300N	3300N	3300N

Catalog Number	Article Number	C	Torque (TQ)	Static Load 1 (F1)	Static Load 2 (F2)	Static Load 3 (F3)
QSNM10060EG	592924	41 mm	55 N·m	4400N	4400N	4900N

ADDITIONAL PRODUCT DETAILS

Static Load 1 represents 1.5 mm strut channel thickness. Static Load 2 represents 2.0 mm strut channel thickness. Static Load 3 represents 2.5 mm strut channel thickness.

DIAGRAMS



WARNING

nVent products shall be installed and used only as indicated in nVent's product instruction sheets and training materials. Instruction sheets are available at www.nvent.com and from your nVent customer service representative. Improper installation, misuse, misapplication or other failure to completely follow nVent's instructions and warnings may cause product malfunction, property damage, serious bodily injury and death and/or void your warranty.

North America

+1.800.753.9221
Option 1 – Customer Care
Option 2 – Technical Support

Europe

Netherlands:
+31 800-0200135
France:
+33 800 901 793

Europe

Germany:
800 1890272
Other Countries:
+31 13 5835404

APAC

Shanghai:
+ 86 21 2412 1618/19
Sydney:
+61 2 9751 8500



Our powerful portfolio of brands:

CADDY ERICO HOFFMAN ILSCO SCHROFF TRACHTE

