

A2 Standard Coupler, Plain



CERTIFICATIONS



FEATURES

Designed to splice the same diameter bars where the second bar can be rotated and is not restricted in its axial direction

Slim design maintains concrete cover

Installs quickly and easily

SPECIFICATIONS

- Finish:** Plain
- Coupler Protector:** Standard
- Material:** Steel

Table 1/2

| Catalog Number | Rebar Size, Metric | Rebar Size, US | Rebar Size, Canada | Hex Width (W) | Diameter (Ø) | Length (L) |
|----------------|--------------------|----------------|--------------------|---------------|--------------|------------|
| EL12A2N | 12 mm | #4 | 10M | 17 mm | | 42mm |
| EL10A2N | 10 mm | #3 | | 17 mm | | 48mm |
| EL16A2N | 16 mm | #5 | 15M | 22 mm | | 56mm |
| EL14A2N | 14 mm | | | 22 mm | | 50mm |

| Catalog Number | Rebar Size, Metric | Rebar Size, US | Rebar Size, Canada | Hex Width (W) | Diameter (Ø) | Length (L) |
|----------------|--------------------|----------------|--------------------|---------------|--------------|------------|
| EL18A2N | 18 mm | | | 27 mm | | 61mm |
| EL20A2N | 20 mm | #6 | 20M | 27 mm | | 72mm |
| EL22A2N | 22 mm | #7 | | | 32 mm | 81mm |
| EL25A2N | 25 mm | #8 | 25M | | 36 mm | 86mm |
| EL28A2N | 28 mm | #9 | 30M | | 40 mm | 92mm |
| EL30A2N | 30 mm | | | | 45 mm | 92mm |
| EL38A2N | 38 mm | #12 | | | 53 mm | 106mm |
| EL32A2N | 32 mm | #10 | | | 45 mm | 97mm |
| EL34A2N | 34 mm | | | | 48 mm | 97mm |
| EL40A2N | 40 mm | | | | 55 mm | 127mm |
| EL36A2N | 36 mm | #11 | 35M | | 50 mm | 102mm |
| EL57TA2N | 57 mm | #18 | 55M | | 80 mm | 168mm |
| EL43TA2N | 43 mm | #14 | 45M | | 60 mm | 137mm |
| EL50TA2N | 50 mm | | | | 70 mm | 167mm |

Table 2/2

| Catalog Number | Bar Depth (BD) | Bar Gap (BG) | Unit Weight | Package Quantity | Certifications |
|----------------|----------------|--------------|-------------|------------------|----------------|
| EL12A2N | 15mm | 12mm | 0.06 kg | 285 | CARES |
| EL10A2N | 18mm | 12mm | 0.08 kg | 285 | |
| EL16A2N | 22mm | 12mm | 0.12 kg | 150 | DCL, CARES |
| EL14A2N | 19mm | 12mm | 0.12 kg | 150 | |
| EL18A2N | 24mm | 13mm | 0.21 kg | 70 | |
| EL20A2N | 28mm | 16mm | 0.23 kg | 70 | CARES, DCL |
| EL22A2N | 32mm | 17mm | 0.35 kg | 50 | |
| EL25A2N | 34mm | 18mm | 0.43 kg | 50 | DCL, CARES |
| EL28A2N | 38mm | 16mm | 0.58 kg | 42 | |
| EL30A2N | 38mm | 16mm | 0.81 kg | 20 | |
| EL38A2N | 44mm | 18mm | 1.14 kg | 12 | |
| EL32A2N | 40mm | 17mm | 0.73 kg | 16 | DCL, CARES |
| EL34A2N | 40mm | 17mm | 0.92 kg | 16 | |
| EL40A2N | 55mm | 17mm | 1.36 kg | 12 | |
| EL36A2N | 43mm | 16mm | 0.99 kg | 16 | |
| EL57TA2N | 71mm | 26mm | 4.14 kg | 6 | |
| EL43TA2N | 56mm | 25mm | 1.92 kg | 12 | |

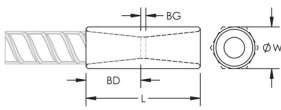
| Catalog Number | Bar Depth (BD) | Bar Gap (BG) | Unit Weight | Package Quantity | Certifications |
|----------------|----------------|--------------|-------------|------------------|----------------|
| EL50TA2N | 71mm | 25mm | 3 kg | 6 | DCL |

Designed to Meet: AASHTO;ABNT NBR 8548:1984;ACI 318 Type 1 (125% Specified Yield);ACI 318 Type 2 (Specified Tensile);ACI 349;ACI 359;AS3600

ADDITIONAL PRODUCT DETAILS

Bar dimensions and weights listed may vary by region. Coupler sizes not shown may be available by special order. Contact your nVent LENTON representative for more information.

DIAGRAMS



WARNING

nVent products shall be installed and used only as indicated in nVent's product instruction sheets and training materials. Instruction sheets are available at www.nvent.com and from your nVent customer service representative. Improper installation, misuse, misapplication or other failure to completely follow nVent's instructions and warnings may cause product malfunction, property damage, serious bodily injury and death and/or void your warranty.

North America

+1.800.753.9221
Option 1 – Customer Care
Option 2 – Technical Support

Europe

Netherlands:
+31 800-0200135
France:
+33 800 901 793

Europe

Germany:
800 1890272
Other Countries:
+31 13 5835404

APAC

Shanghai:
+ 86 21 2412 1618/19
Sydney:
+61 2 9751 8500



Our powerful portfolio of brands:

CADDY ERICO HOFFMAN ILSCO SCHROFF TRACHTE