

# 1-1 Hole Angle Bracket



## FEATURES

Used to create metal frames with nVent CADDY Eristrut channels

## SPECIFICATIONS

Table 1/2

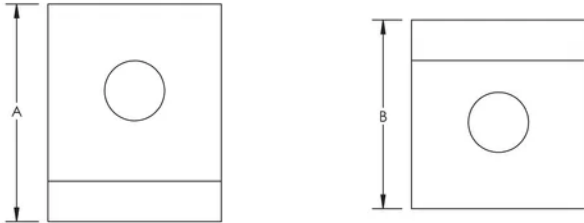
Catalog Number	Article Number	Material	Finish	A	B	Screw Included
ZW201	313340	Steel	Hot-Dip Galvanized	58 mm	42 mm	Yes
ZW200	313330	Steel	Hot-Dip Galvanized	50 mm	48 mm	Yes
ZWA201	387610	Steel	Hot-Dip Galvanized	58 mm	42 mm	No
ZWA200EG	387601	Steel	Electrogalvanized	50 mm	47 mm	No
ZWA200S6	388670	Stainless Steel 316 (EN 1.4401)		50 mm	48 mm	No
ZWA200	387600	Steel	Hot-Dip Galvanized	50 mm	48 mm	No

Table 2/2

Catalog Number	Article Number	Screw Diameter (Sc)	Screw Length (L)
ZW201	313340	10 mm	25mm
ZW200	313330	10 mm	25mm

Catalog Number	Article Number	Screw Diameter (Sc)	Screw Length (L)
ZWA201	387610		
ZWA200EG	387601		
ZWA200S6	388670		
ZWA200	387600		

## DIAGRAMS



## WARNING

nVent products shall be installed and used only as indicated in nVent's product instruction sheets and training materials. Instruction sheets are available at [www.nvent.com](http://www.nvent.com) and from your nVent customer service representative. Improper installation, misuse, misapplication or other failure to completely follow nVent's instructions and warnings may cause product malfunction, property damage, serious bodily injury and death and/or void your warranty.

### North America

+1.800.753.9221  
Option 1 – Customer Care  
Option 2 – Technical  
Support

### Europe

Netherlands:  
+31 800-0200135  
France:  
+33 800 901 793

### Europe

Germany:  
800 1890272  
Other Countries:  
+31 13 5835404

### APAC

Shanghai:  
+ 86 21 2412 1618/19  
Sydney:  
+61 2 9751 8500



Our powerful portfolio of brands:

**CADDY ERICO HOFFMAN ILSCO SCHROFF TRACHTE**

