

# Saddle Washer



## FEATURES

U-shaped wrap around washer

## SPECIFICATIONS

Table 1/2

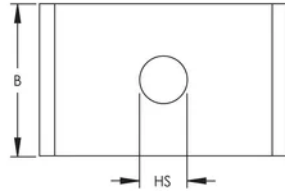
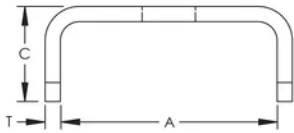
Catalog Number	Article Number	Material	Finish	Hole Size (HS)	Thickness (T)	A
PLN13HD	589949	Steel	Hot-Dip Galvanized	13 mm	3 mm	42 mm
PLN10	589930	Steel	Electrogalvanized	10.5 mm	3 mm	42 mm
PLN13	589940	Steel	Electrogalvanized	13 mm	3 mm	42 mm
PLN8	589925	Steel	Electrogalvanized	8.4 mm	3 mm	42 mm
PLN11S6	589928	Stainless Steel 316 (EN 1.4401)		11 mm	3 mm	42 mm

Table 2/2

Catalog Number	Article Number	B
PLN13HD	589949	30 mm
PLN10	589930	30 mm
PLN13	589940	30 mm

Catalog Number	Article Number	B
PLN8	589925	30 mm
PLN11S6	589928	50 mm

## DIAGRAMS



## WARNING

nVent products shall be installed and used only as indicated in nVent's product instruction sheets and training materials. Instruction sheets are available at [www.nvent.com](http://www.nvent.com) and from your nVent customer service representative. Improper installation, misuse, misapplication or other failure to completely follow nVent's instructions and warnings may cause product malfunction, property damage, serious bodily injury and death and/or void your warranty.

### North America

+1.800.753.9221  
Option 1 – Customer Care  
Option 2 – Technical  
Support

### Europe

Netherlands:  
+31 800-0200135  
France:  
+33 800 901 793

### Europe

Germany:  
800 1890272  
Other Countries:  
+31 13 5835404

### APAC

Shanghai:  
+ 86 21 2412 1618/19  
Sydney:  
+61 2 9751 8500



Our powerful portfolio of brands:

**CADDY ERICO HOFFMAN ILSCO SCHROFF TRACHTE**

