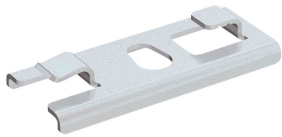


# PEMSA Wire Basket Tray Quick Center Support, M8–M10 Hole

## Data Solutions

### CATALOG NUMBER

**WBTQCTRSPRTM10**



### CERTIFICATIONS



### FEATURES

Ideal for tray widths up to 200mm

Side load access for cable installation

IEC 61537 load rating and earthing compliant

### PRODUCT ATTRIBUTES

Article Number: 820425

Material: Steel

Finish: Electrogalvanized

Length (L): 59mm

Width (W): 35mm

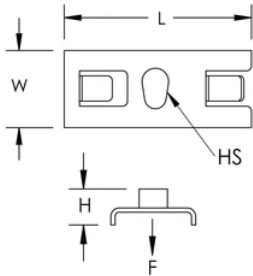
Height (H): 5mm

Hole Size (HS): 8 – 10mm

Static Load: 833N

## DIAGRAMS

---



## WARNING

---

nVent products shall be installed and used only as indicated in nVent's product instruction sheets and training materials. Instruction sheets are available at [www.nvent.com](http://www.nvent.com) and from your nVent customer service representative. Improper installation, misuse, misapplication or other failure to completely follow nVent's instructions and warnings may cause product malfunction, property damage, serious bodily injury and death and/or void your warranty.



Our powerful portfolio of brands:

**CADDY ERICO HOFFMAN ILSCO SCHROFF TRACHTE**