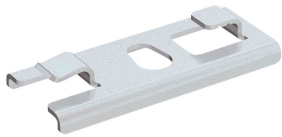


PEMSA Wire Basket Tray Quick Center Support, M6 Hole

Data Solutions

CATALOG NUMBER

WBTQCTRSPRTM6



CERTIFICATIONS



FEATURES

Ideal for tray widths up to 200mm

Side load access for cable installation

IEC 61537 load rating and earthing compliant

PRODUCT ATTRIBUTES

Article Number: 820405

Material: Steel

Finish: Electrogalvanized

Length (L): 59mm

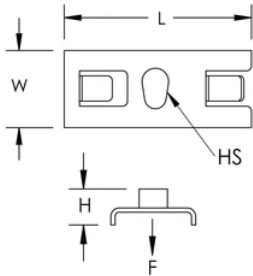
Width (W): 35mm

Height (H): 5mm

Hole Size (HS): 6mm

Static Load: 833N

DIAGRAMS



WARNING

nVent products shall be installed and used only as indicated in nVent's product instruction sheets and training materials. Instruction sheets are available at www.nvent.com and from your nVent customer service representative. Improper installation, misuse, misapplication or other failure to completely follow nVent's instructions and warnings may cause product malfunction, property damage, serious bodily injury and death and/or void your warranty.



Our powerful portfolio of brands:

CADDY ERICO HOFFMAN ILSCO SCHROFF TRACHTE