

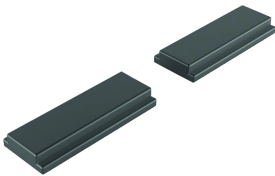
# Magnet for Mounting Compact LED-Light 550LM

## Data Solutions

### CATALOG NUMBER

---

**57275**



The enclosure light provides a compact and flexible solution, and offers fast, easy assembly and installation. For mounting flexibility, the LED light can be fastened to the enclosure with screws or quickly attached to any flat steel surfaces with optional magnetic kits. A motion sensor is also available.

### CERTIFICATIONS

---



### FEATURES

---

Power cable for LED light mounting into cabinet

Lights can be easily mounted vertically or horizontally

Simple through-wiring based on a plug-and-play system

### PRODUCT ATTRIBUTES

---

Accessory Type: Lights

Protection Rating: IP20

Package Quantity: 2

Depth: 4mm

Finish: Smooth Matte

Height: 30mm

Material: Magnet

Product Type: Light

Type: Cabinet Light; Magnet

Width: 12mm

Gross Weight: 0.084kg

Weight: 0.08kg

## WARNING

---

nVent products shall be installed and used only as indicated in nVent's product instruction sheets and training materials. Instruction sheets are available at [www.nvent.com](http://www.nvent.com) and from your nVent customer service representative. Improper installation, misuse, misapplication or other failure to completely follow nVent's instructions and warnings may cause product malfunction, property damage, serious bodily injury and death and/or void your warranty.



Our powerful portfolio of brands:

**CADDY ERICO HOFFMAN ILSCO SCHROFF TRACHTE**