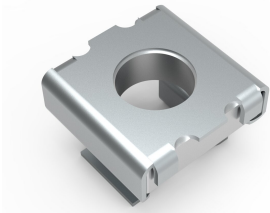


## Cage Nut, CN



A standard, off the shelf solution for the mounting of equipment, front closing panels or shelves on to 19" profiles.

### FEATURES

---

Description: For 2 mm steel thickness.

Pack quantity: 50 pieces.

## SPECIFICATIONS

Table 1/1

Catalog Number	Height	Width	Depth	Thread Type	Material	Finish
CN6	17mm	17mm	13mm	M6	Mild Steel	Plated

## WARNING

nVent products shall be installed and used only as indicated in nVent's product instruction sheets and training materials. Instruction sheets are available at [www.nvent.com](http://www.nvent.com) and from your nVent customer service representative. Improper installation, misuse, misapplication or other failure to completely follow nVent's instructions and warnings may cause product malfunction, property damage, serious bodily injury and death and/or void your warranty.



Our powerful portfolio of brands:

**CADDY ERICO HOFFMAN ILSCO SCHROFF TRACHTE**