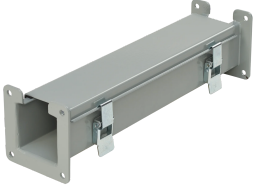


# Cutoff Fitting Lay-In Hinged Cover



Lay-In Hinged Cover Cutoff Fittings are used for lengths of 9.00 inch (229 mm) to 15.00 inch (381 mm). Body comes in two pieces. Shorten body and cover to the desired length and weld together. Fittings are finished with paint over plated surfaces.

## FEATURES

---

Lay-In Hinged Cover Cutoff Fittings are used for lengths of 9.00 inch (229 mm) to 15.00 inch (381 mm)

Body comes in two pieces. Shorten body and cover to the desired length and weld together

Fittings are finished with paint over plated surfaces

## SPECIFICATIONS

<b>Color Code:</b>	ANSI 61
<b>Finish:</b>	Galvanized; Powder Coated
<b>Color:</b>	Gray
<b>Material:</b>	Mild Steel

Table 1/1

Catalog Number	Type	Height	Width	Thickness	Sealing Plate Type	Sealing Plate Quantity
F88LXL	Cut-Off Fitting	203mm	203mm	1.9mm	Flat	1
F22LXL	Cut-Off Fitting	64mm	64mm	1.9mm	Flat	1
F126LXL	Cut-Off Fitting	305mm	152mm	1.9mm	Flat	1
F44LXL	Cut-Off Fitting	102mm	102mm	1.9mm	Flat	1
F66LXL	Cut-Off Fitting	152mm	152mm	1.9mm	Flat	1

## WARNING

nVent products shall be installed and used only as indicated in nVent's product instruction sheets and training materials. Instruction sheets are available at [www.nvent.com](http://www.nvent.com) and from your nVent customer service representative. Improper installation, misuse, misapplication or other failure to completely follow nVent's instructions and warnings may cause product malfunction, property damage, serious bodily injury and death and/or void your warranty.



Our powerful portfolio of brands:

**CADDY ERICO HOFFMAN ILSCO SCHROFF TRACHTE**