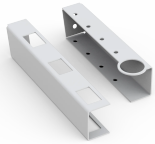


Wire tool holder, WTH



A flexible, one-stop solution for optimizing your wiring workstation and increasing the efficiency of the manual assemblies, wire tool holders safely and securely store handheld cable assembly tools.

FEATURES

Delivery: Set of 2 wire tool holders, assembly kit

Material: Mild steel

Finish: RAL 7024 structured powder coating

SPECIFICATIONS

Table 1/1

| Catalog Number | Height | Width | Depth | Product Family | Material | Finish |
|----------------|--------|-------|-------|-----------------------|------------|---------------|
| WTH2 | 100mm | 24mm | 25mm | Panel Shop Automation | Mild Steel | Powder Coated |

WARNING

nVent products shall be installed and used only as indicated in nVent's product instruction sheets and training materials. Instruction sheets are available at www.nvent.com and from your nVent customer service representative. Improper installation, misuse, misapplication or other failure to completely follow nVent's instructions and warnings may cause product malfunction, property damage, serious bodily injury and death and/or void your warranty.



Our powerful portfolio of brands:

CADDY ERICO HOFFMAN ILSCO SCHROFF TRACHTE