

A12 Standard Coupler, Plain, Worldwide Design, 20 mm, #6, 20M

CATALOG NUMBER

EL20A12N



CERTIFICATIONS



FEATURES

Designed to splice the same diameter bars where the second bar can be rotated and is not restricted in its axial direction

Slim design maintains concrete cover

Installs quickly and easily

PRODUCT ATTRIBUTES

Material: Steel

Finish: Plain

Design Version: Worldwide (Globally Available Materials)

Rebar Size, Metric: 20 mm

Rebar Size, US: #6

Rebar Size, Canada: 20M

Hex Width (W): 27 mm

Length (L): 87mm

Bar Depth (BD): 35mm

Bar Gap (BG): 17mm

Unit Weight: 0.27 kg

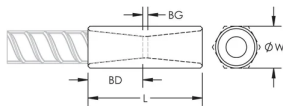
Designed to Meet: AASHTO;ABNT NBR 8548:1984;ACI 318 Type 1 (125% Specified Yield);ACI 318 Type 2 (Specified Tensile);ACI 349;ACI 359;AS3600

Package Quantity: 70

ADDITIONAL PRODUCT DETAILS

Bar dimensions and weights listed may vary by region. Coupler sizes not shown may be available by special order. Contact your nVent LENTON representative for more information.

DIAGRAMS



WARNING

nVent products shall be installed and used only as indicated in nVent's product instruction sheets and training materials. Instruction sheets are available at www.nvent.com and from your nVent customer service representative. Improper installation, misuse, misapplication or other failure to completely follow nVent's instructions and warnings may cause product malfunction, property damage, serious bodily injury and death and/or void your warranty.

North America

+1.800.753.9221

Option 1 – Customer Care

Option 2 – Technical

Support

Europe

Netherlands:

+31 800-0200135

France:

+33 800 901 793

Europe

Germany:

800 1890272

Other Countries:

+31 13 5835404

APAC

Shanghai:

+ 86 21 2412 1618/19

Sydney:

+61 2 9751 8500



Our powerful portfolio of brands:

CADDY

ERICO

HOFFMAN

ILSCO

SCHROFF

TRACHTE