

# P13 Position Coupler, Female Only, Worldwide Design, 20 mm, #6, 20M

## CATALOG NUMBER

**EL20P13LFN**



Used in segmental pour and closure pour applications. Male and female components are sold separately.

## FEATURES

Designed to splice two curved, bent or straight bars, when neither bar can be rotated and where the ongoing bar is NOT free to move in its axial direction

Adjustability in the female end of the coupler allows the coupler to extend out to meet the taper-threaded reinforcing bar

## PRODUCT ATTRIBUTES

Material: Steel

Finish: Plain

Coupler Adjustment: Standard

Rebar Size, Metric: 20 mm

Rebar Size, US: #6

Rebar Size, Canada: 20M

Diameter (Ø): 35 mm

Coupler Body (CB): 126mm

Bar Depth (BD): 35mm

Thread Size (TS): M26

Unit Weight: 0.52 kg

Package Quantity: 40

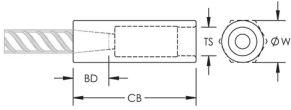
## ADDITIONAL PRODUCT DETAILS

---

Bar dimensions and weights listed may vary by region. Coupler sizes not shown may be available by special order. Contact your nVent LENTON representative for more information.

## DIAGRAMS

---



## WARNING

---

nVent products shall be installed and used only as indicated in nVent's product instruction sheets and training materials. Instruction sheets are available at [www.nvent.com](http://www.nvent.com) and from your nVent customer service representative. Improper installation, misuse, misapplication or other failure to completely follow nVent's instructions and warnings may cause product malfunction, property damage, serious bodily injury and death and/or void your warranty.

### North America

+1.800.753.9221  
Option 1 – Customer Care  
Option 2 – Technical  
Support

### Europe

Netherlands:  
+31 800-0200135  
France:  
+33 800 901 793

### Europe

Germany:  
800 1890272  
Other Countries:  
+31 13 5835404

### APAC

Shanghai:  
+ 86 21 2412 1618/19  
Sydney:  
+61 2 9751 8500



Our powerful portfolio of brands:

**CADDY ERICO HOFFMAN ILSCO SCHROFF TRACHTE**