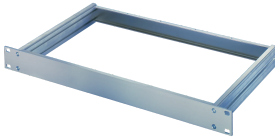


MultipacPRO 19" Chassis Basic Kit

Such a kit enables a customer to configure the 3 different top / bottom covers.



CERTIFICATIONS



FEATURES

For non-standardized assemblies (1 ... 5 U) and standardized assemblies (1, 2 U) conforming to IEC 60297-3-105

Frame consists of two lateral parts and front/rear panel

Material: aluminium

Select further components (Accessories)

SPECIFICATIONS

- Material:** Aluminum
- Type:** Configurable
- Product Family:** MultipacPRO
- EMC Shielding:** No (Retrofittable)
- Product Type:** Subrack/Chassis

Table 1/1

| Catalog Number | Rack Height | Depth | Usable Width | Mounting | Complies With | Certifications |
|----------------|-------------|-------|--------------|----------|-----------------|----------------|
| 20860-202 | 1U | 280mm | 403mm | Rack | IEC 60297-3-100 | RoHS |

| CatalogNumber | Rack Height | Depth | Usable Width | Mounting | Complies With | Certifications |
|---------------|-------------|-------|--------------|----------|-----------------|----------------|
| 20860-203 | 1U | 340mm | 403mm | Rack | IEC 60297-3-100 | RoHS |
| 20860-204 | 1U | 400mm | 403mm | Rack | IEC 60297-3-100 | |
| 20860-205 | 1U | 460mm | 403mm | Rack | IEC 60297-3-100 | |
| 20860-201 | 1U | 220mm | 403mm | Rack | IEC 60297-3-100 | RoHS |
| 20860-210 | 2U | 220mm | 403mm | Rack | IEC 60297-3-100 | RoHS |
| 20860-214 | 2U | 460mm | 403mm | Rack | IEC 60297-3-100 | |
| 20860-213 | 2U | 400mm | 403mm | Rack | IEC 60297-3-100 | |
| 20860-211 | 2U | 280mm | 403mm | Rack | IEC 60297-3-100 | RoHS |
| 20860-212 | 2U | 340mm | 403mm | Rack | IEC 60297-3-100 | RoHS |
| 20860-221 | 3U | 400mm | 403mm | Rack | IEC 60297-3-100 | RoHS |
| 20860-219 | 3U | 280mm | 403mm | Rack | IEC 60297-3-100 | RoHS |
| 20860-222 | 3U | 460mm | 403mm | Rack | IEC 60297-3-100 | RoHS |
| 20860-220 | 3U | 340mm | 403mm | Rack | IEC 60297-3-100 | RoHS |
| 20860-228 | 4U | 280mm | 403mm | Rack | IEC 60297-3-100 | RoHS |
| 20860-229 | 4U | 340mm | 403mm | Rack | IEC 60297-3-100 | RoHS |
| 20860-231 | 4U | 460mm | 403mm | Rack | IEC 60297-3-100 | RoHS |
| 20860-230 | 4U | 400mm | 403mm | Rack | IEC 60297-3-100 | RoHS |
| 20860-240 | 5U | 460mm | 403mm | Rack | IEC 60297-3-100 | RoHS |

ADDITIONAL PRODUCT DETAILS

Please order mounting plate, cover and base plates, handles, telescopic slides separately.

Dimensions h = clear mounting height = H-8.1 mm, b = clear mounting width = 403 mm.

WARNING

nVent products shall be installed and used only as indicated in nVent's product instruction sheets and training materials. Instruction sheets are available at www.nvent.com and from your nVent customer service representative. Improper installation, misuse, misapplication or other failure to completely follow nVent's instructions and warnings may cause product malfunction, property damage, serious bodily injury and death and/or void your warranty.

North America

All locations
+1.763.422.2661
Chat with us:
nvent.com/schroff

Europe

Straubenhardt, Germany
+49.7082.794.0
Betschdorf, France
+33.3.88.90.64.90
Warsaw, Poland
+48.22.209.98.35
Assago, Italy
+39.02.932.7141
Chat with us:
nvent.com/schroff

Asia

Shanghai, China
+86.21.2412.6943
Qingdao, China
+86.532.8771.6101
Singapore
+65.6768.5800
Shin-Yokohama, Japan
+81.45.476.0271
Chat with us:
nvent.com/schroff

Middle East & India

Dubai, United Arab Emirates
+971.4.378.1700
Bangalore, India
+91.80.6715.2001
Istanbul, Turkey
+90.216.250.7374
Chat with us:
nvent.com/schroff



Our powerful portfolio of brands:

CADDY ERICO HOFFMAN ILSCO SCHROFF TRACHTE