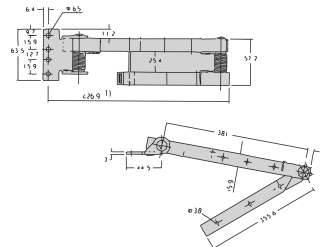
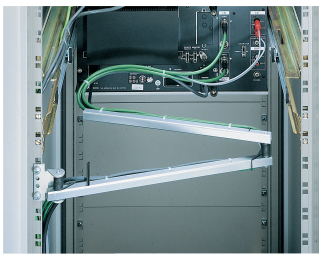


Cable Support Arm With Return Spring

Data Solutions

CATALOG NUMBER

20118-729



Cable support arm allows pull-out devices and chassis to act as cable management tools. The cables would be bundles together using cable ties.

CERTIFICATIONS



FEATURES

For cable support on pull-out devices and chassis

Cable assembling with cable ties

PRODUCT ATTRIBUTES

Static Load: 2kg

Package Quantity: 1

Extended Length: 730mm

Finish: Zinc Plated

Material: Steel

Product Type: Cable Support

Type: Cable Support Arm

Cable Type: With Spring

Net Weight: 0.946kg

ADDITIONAL PRODUCT DETAILS

Please order 19" assembly kit separately.

Space requirement in retracted position is 25 mm.

WARNING

nVent products shall be installed and used only as indicated in nVent's product instruction sheets and training materials. Instruction sheets are available at www.nvent.com and from your nVent customer service representative. Improper installation, misuse, misapplication or other failure to completely follow nVent's instructions and warnings may cause product malfunction, property damage, serious bodily injury and death and/or void your warranty.



Our powerful portfolio of brands:

CADDY ERICO HOFFMAN ILSCO SCHROFF TRACHTE